

Features

- Trifab® VersaGlaze® 601/601T/601UT Framing System is 6" (152.4) deep with a 2" (50.8) sightline
- Center Plane glass applications
- Flush glazed from either the inside or outside
- Screw Spline fabrication
- Dual IsoLock® lanced and debridged thermal break
- Infill options up to 1-1/8" (28.6) thickness
- High performance sill flashing
- Permanodic® anodized finishes option
- Painted finishes in standard and custom choices

Optional Features

- Acoustical rating per AAMA 1801 and ASTM E 1425
- Project specific U-factors (See Thermal Charts)
- Integrates with Versoleil® SunShade Outrigger System and Horizontal Single Blade System
- Profit\$Maker® Plus die sets

Product Applications

- Storefront, Ribbon Window or Punched Openings
- Single-span
- Integrated entrance framing allowing Kawneer standard entrances or other specialty entrances to be incorporated
- Kawneer windows, or GLASSvent® Windows for Storefront Framing, or GLASSvent® UT Windows are easily incorporated

For specific product applications,
consult your Kawneer representative.

Laws and building and safety codes governing the design and use of Kawneer products, such as glazed entrance, window, and curtain wall products, vary widely. Kawneer does not control the selection of product configurations, operating hardware, or glazing materials, and assumes no responsibility therefor.

Kawneer reserves the right to change configuration without prior notice when deemed necessary for product improvement.
© 2013, Kawneer Company, Inc.

Laws and building and safety codes governing the design and use of Kawneer products, such as glazed entrance, window, and curtain wall products, vary widely. Kawneer does not control the selection of product configurations, operating hardware, or glazing materials, and assumes no responsibility therefor.

Kawneer reserves the right to change configuration without prior notice when deemed necessary for product improvement.
© 2013, Kawneer Company, Inc.

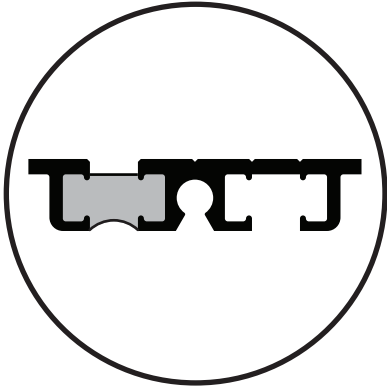
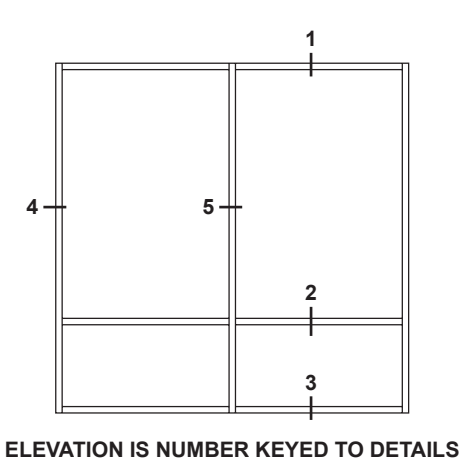
BASIC FRAMING DETAILS (Outside Glazed).....4
BASIC FRAMING DETAILS (Inside Glazed).....5
MISCELLANEOUS FRAMING (Center).....6
CURVING7
CORNERS.....8
AA®250/425 THERMAL ENTRANCE DETAILS9
350 STANDARD ENTRANCE DETAILS10
350 STANDARD ENTRANCE DETAILS
WITH CRIPPLE JAMBS 11
GLASSvent® FOR STOREFRONT FRAMING12
8225TL THERMAL WINDOW DETAILS13
GLASSvent® UT WINDOW DETAILS 14-15
WIND LOAD / DEADLOAD CHARTS 16-24
THERMAL CHARTS 25-40

Metric (SI) conversion figures are included throughout these details for reference. Numbers in parentheses () are millimeters unless otherwise noted.

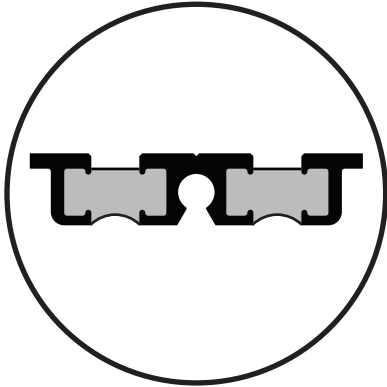
The following metric (SI) units are found in these details:

- m – meter
- cm – centimeter
- mm – millimeter
- s – second
- Pa – pascal
- MPa – megapascal

Additional information and CAD details are available at www.kawneer.com

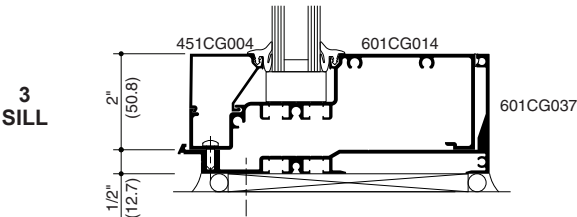
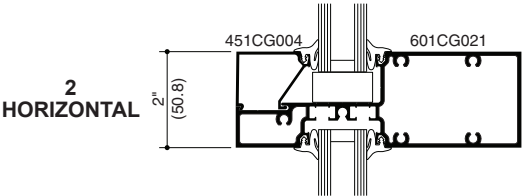
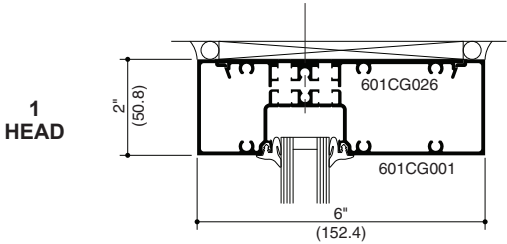
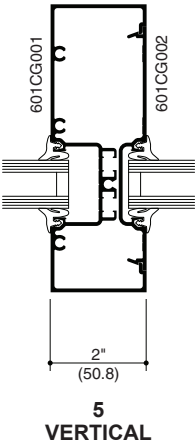
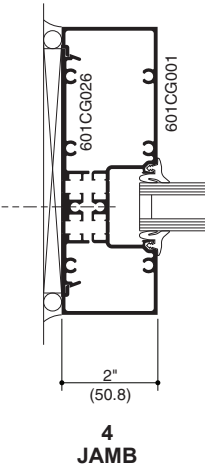


Trifab® VG 601T IsoLock®
THERMAL BREAK



Trifab® VG 601UT DUAL IsoLock®
THERMAL BREAK

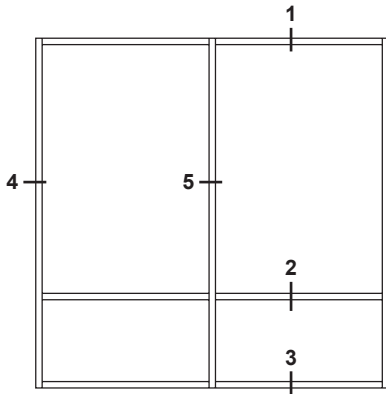
SCREW SPLINE



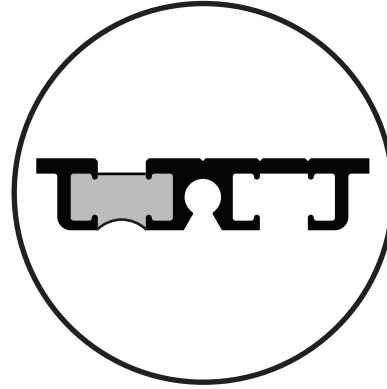
Laws and building and safety codes governing the design and use of Kawneer products, such as glazed entrance, window, and curtain wall products, vary widely. Kawneer does not control the selection of product configurations, operating hardware, or glazing materials, and assumes no responsibility therefor.

Kawneer reserves the right to change configuration without prior notice when deemed necessary for product improvement.
© 2013, Kawneer Company, Inc.

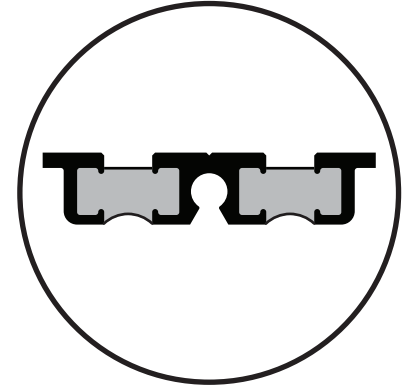
Additional information and CAD details are available at www.kawneer.com



ELEVATION IS NUMBER KEYED TO DETAILS

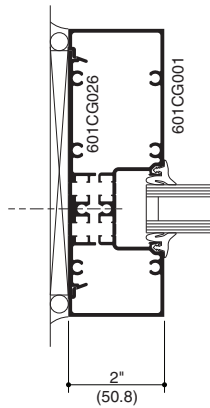


Trifab® VG 601T IsoLock®
THERMAL BREAK

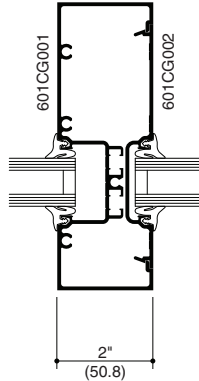


Trifab® VG 601UT DUAL IsoLock®
THERMAL BREAK

SCREW SPLINE

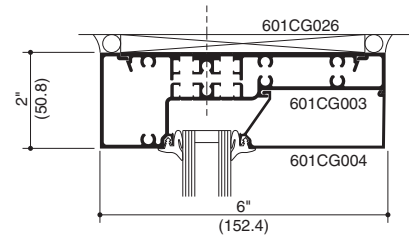


4
JAMB

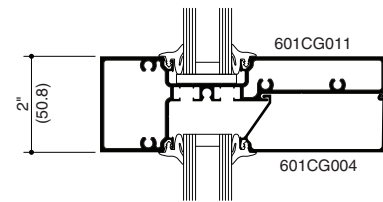


5
VERTICAL

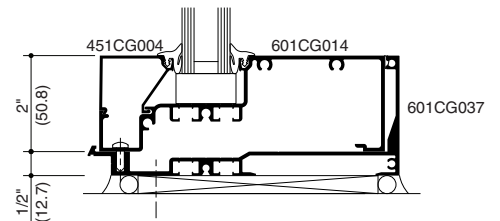
1
HEAD



2
HORIZONTAL



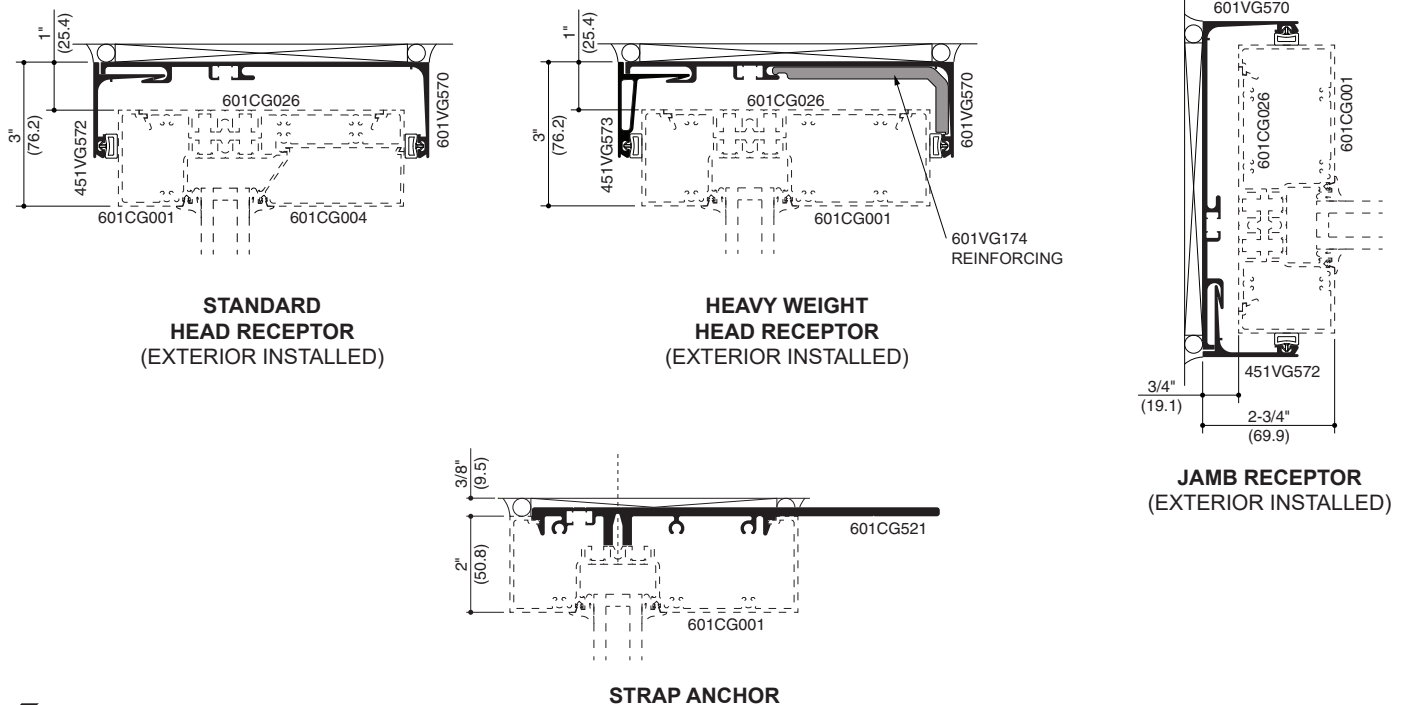
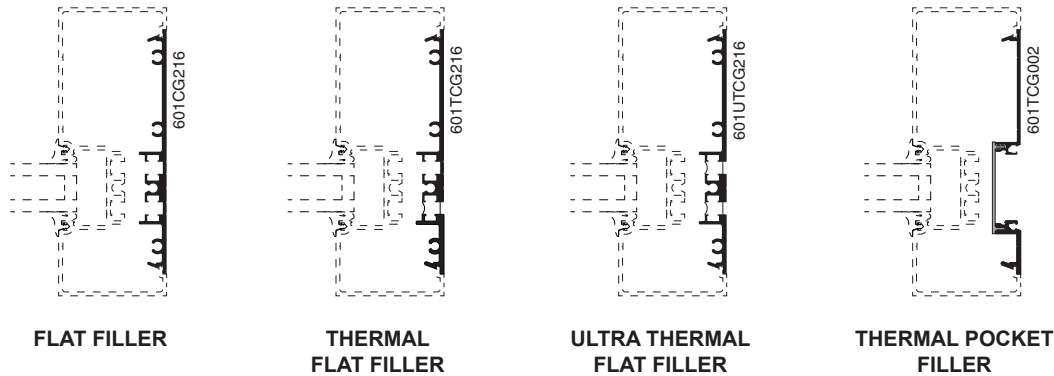
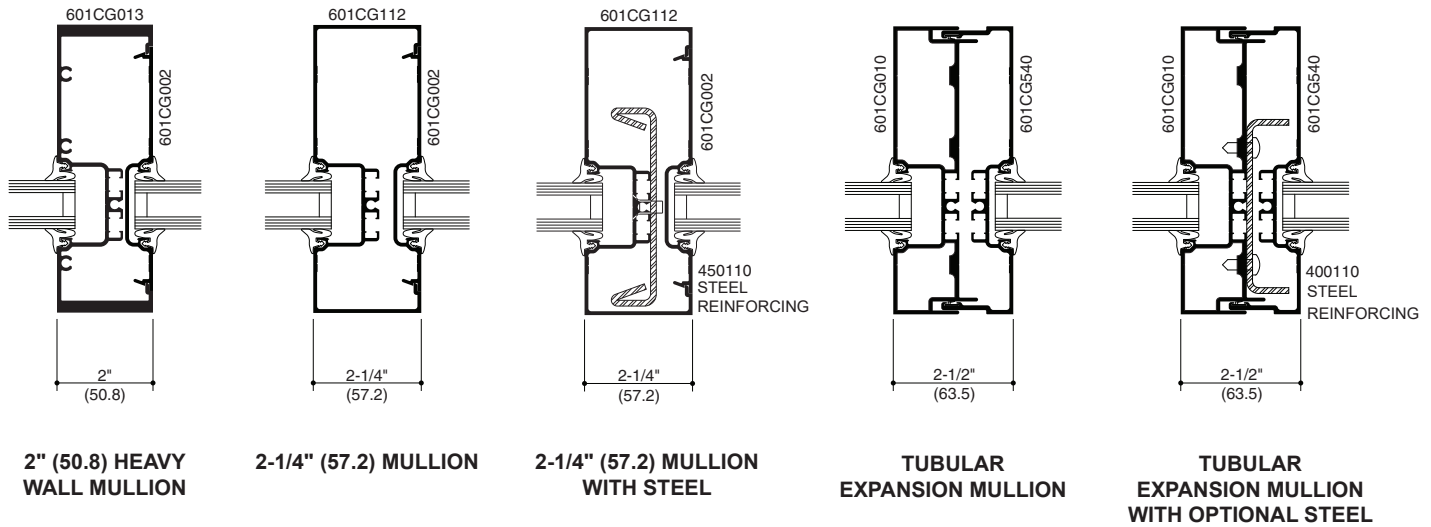
3
SILL



Laws and building and safety codes governing the design and use of Kawneer products, such as glazed entrance, window, and curtain wall products, vary widely. Kawneer does not control the selection of product configurations, operating hardware, or glazing materials, and assumes no responsibility therefor.

Kawneer reserves the right to change configuration without prior notice when deemed necessary for product improvement.
© 2013, Kawneer Company, Inc.

Additional information and CAD details are available at www.kawneer.com

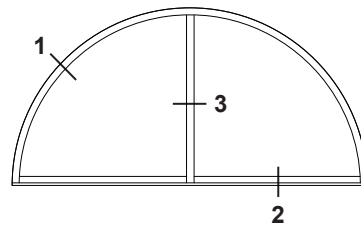


Laws and building and safety codes governing the design and use of Kawneer products, such as glazed entrance, window, and curtain wall products, vary widely. Kawneer does not control the selection of product configurations, operating hardware, or glazing materials, and assumes no responsibility therefor.

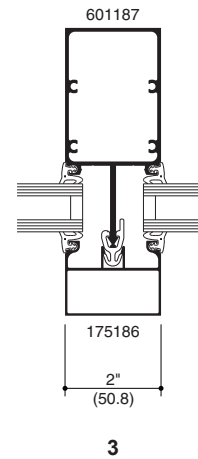
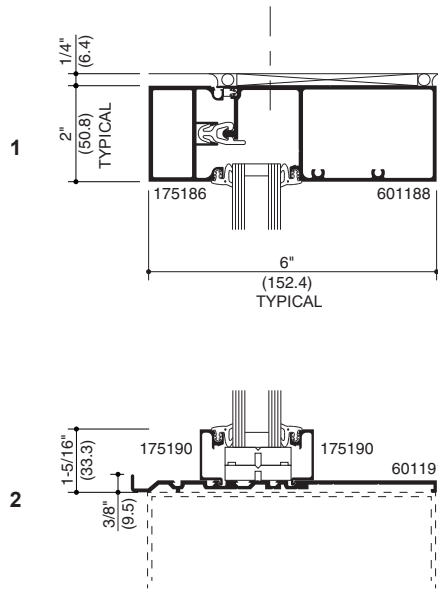
Kawneer reserves the right to change configuration without prior notice when deemed necessary for product improvement.

© 2013, Kawneer Company, Inc.

Additional information and CAD details are available at www.kawneer.com



CURVING DETAILS

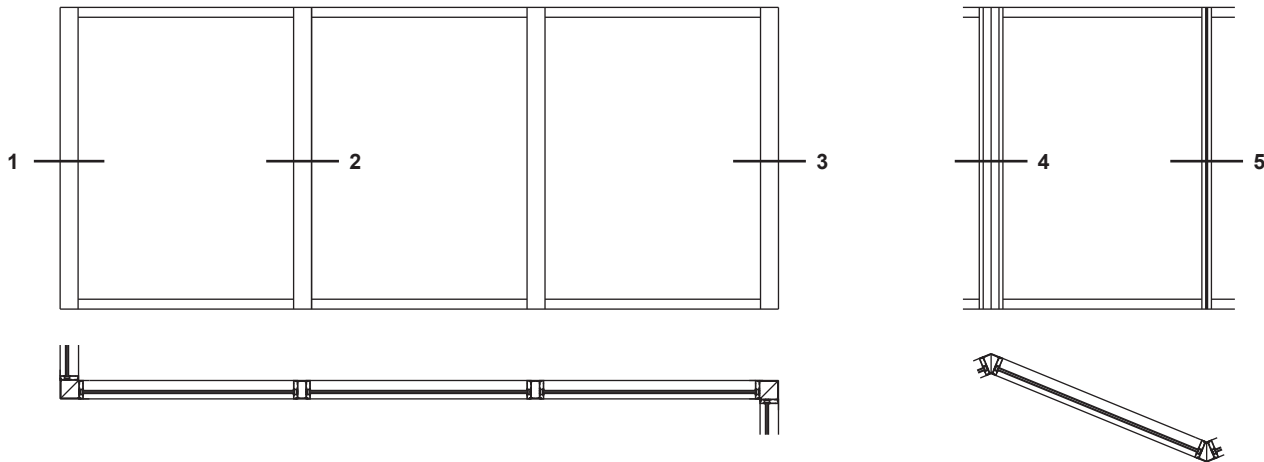


Laws and building and safety codes governing the design and use of Kawneer products, such as glazed entrance, window, and curtain wall products, vary widely. Kawneer does not control the selection of product configurations, operating hardware, or glazing materials, and assumes no responsibility therefor.

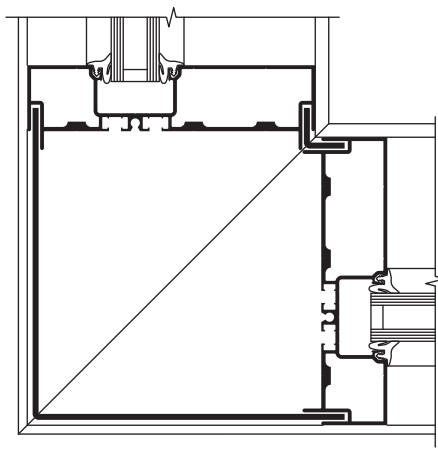
Kawneer reserves the right to change configuration without prior notice when deemed necessary for product improvement.
© 2013, Kawneer Company, Inc.

Additional information and CAD details are available at www.kawneer.com

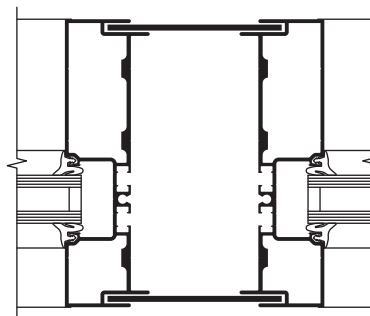
THESE DETAILS ARE TYPICAL FOR ALL 601, 601T, AND 601UT CONDITIONS.



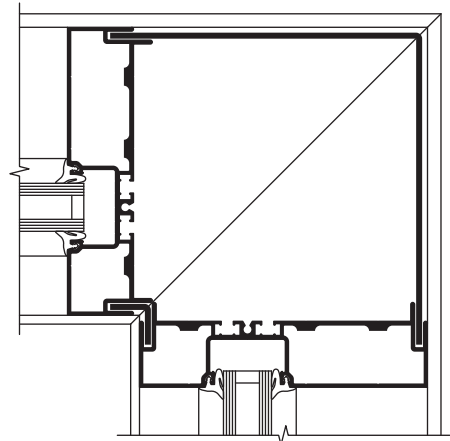
NOTE: 1" (25.4) infill shown.



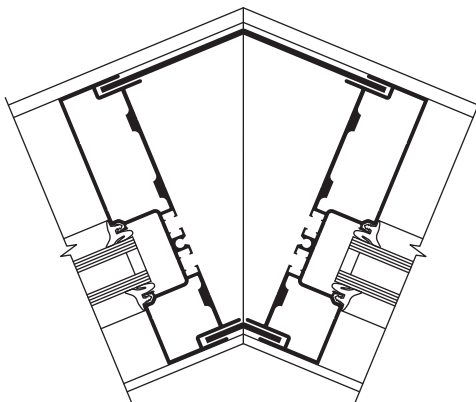
1
OUTSIDE 90°
CORNER



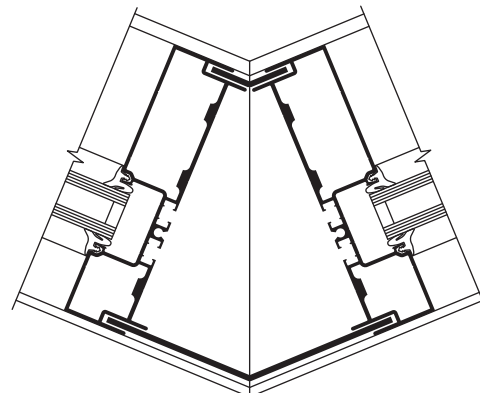
2
6" (152.4) MULLION POST



3
INSIDE 90°
CORNER



4
INSIDE 135°
CORNER



5
OUTSIDE 135°
CORNER

Laws and building and safety codes governing the design and use of Kawneer products, such as glazed entrance, window, and curtain wall products, vary widely. Kawneer does not control the selection of product configurations, operating hardware, or glazing materials, and assumes no responsibility therefor.

Kawneer reserves the right to change configuration without prior notice when deemed necessary for product improvement.

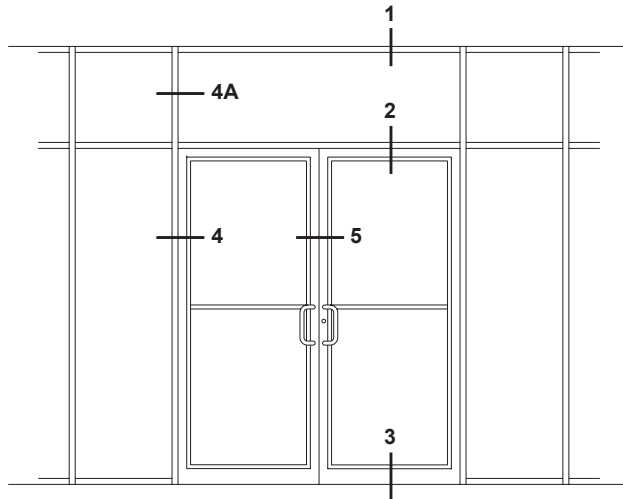
© 2013, Kawneer Company, Inc.

Additional information and CAD details are available at www.kawneer.com

Trifab® VersaGlaze® 601T FRAMING INCORPORATING KAWNEER "AA®250" DOORS.

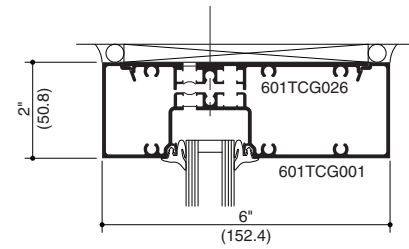
NOTE: OTHER TYPES OF KAWNEER DOORS MAY BE USED WITH THIS FRAMING SYSTEM.

SEE ENTRANCE DETAILS FOR ADDITIONAL INFORMATION.

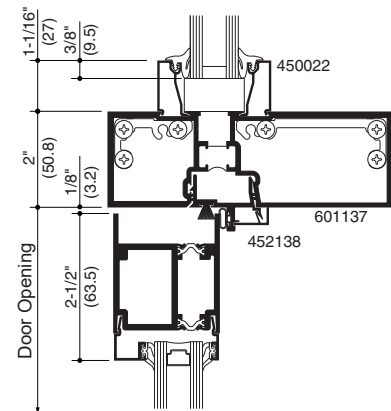


ELEVATION IS NUMBER KEYED TO DETAILS.

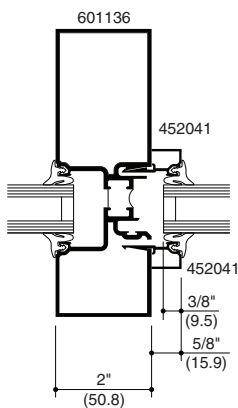
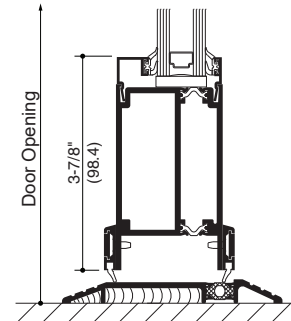
1
HEAD



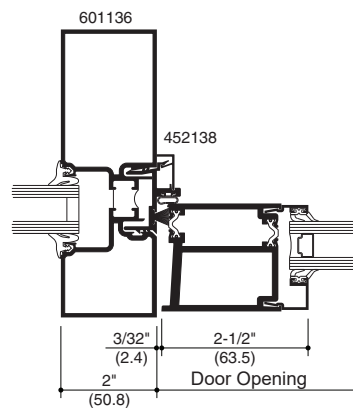
2
TRANSOM
BAR



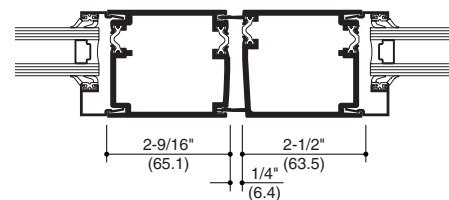
3
BOTTOM
RAIL



4A
TRANSOM
JAMB



4
DOOR
JAMB



5
MEETING
STILES

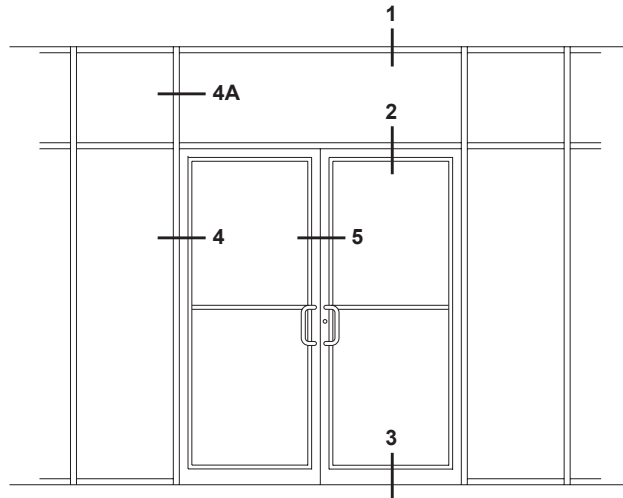
AA® 250/425 THERMAL DOOR

Additional information and CAD details are available at www.kawneer.com

Trifab® VersaGlaze® 601 FRAMING INCORPORATING KAWNEER "350" DOORS.

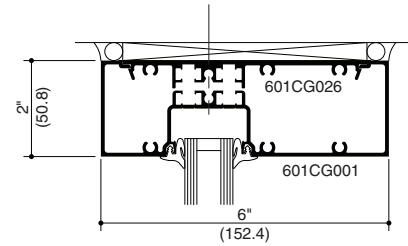
NOTE: OTHER TYPES OF KAWNEER DOORS MAY BE USED WITH THIS FRAMING SYSTEM.

SEE ENTRANCE DETAILS FOR ADDITIONAL INFORMATION.

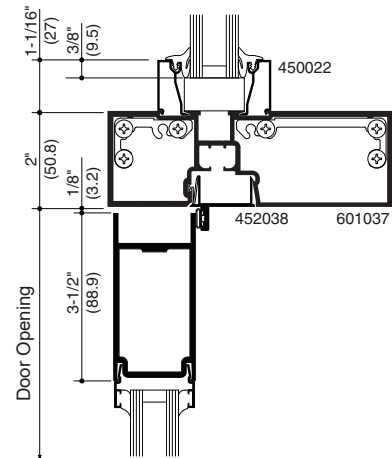


ELEVATION IS NUMBER KEYED TO DETAILS.

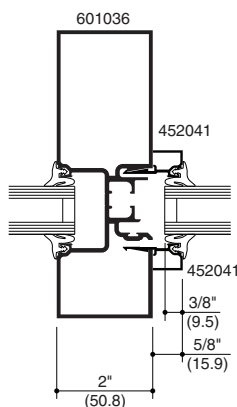
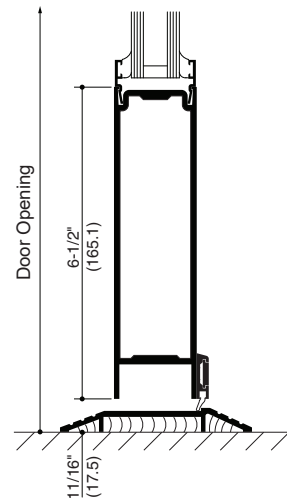
1
HEAD



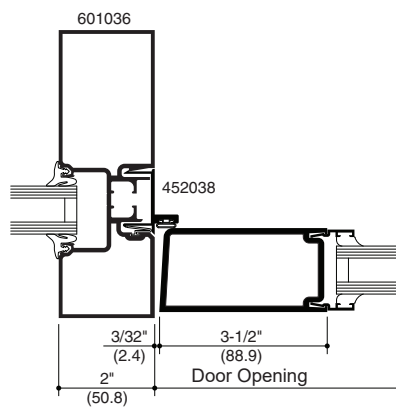
2
TRANSOM
BAR



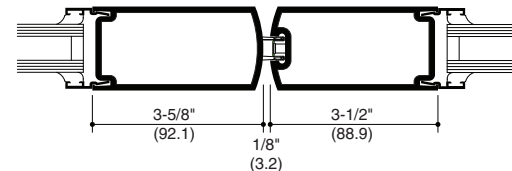
3
BOTTOM
RAIL



4A
DOOR
JAMB



4
DOOR
JAMB



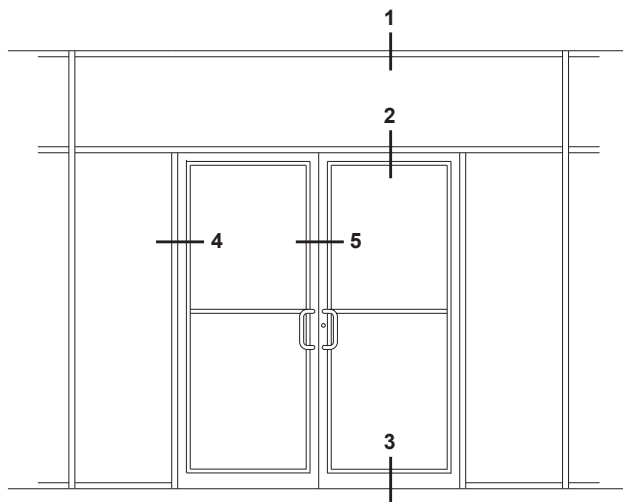
5
MEETING
STILES

350 MEDIUM STILE DOOR

Additional information and CAD details are available at www.kawneer.com

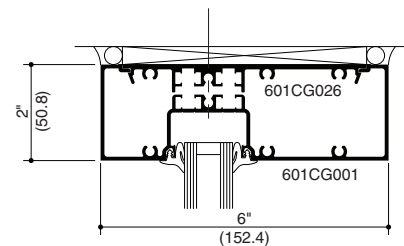
Trifab® VersaGlaze® 601 FRAMING INCORPORATING KAWNEER "350" DOORS.

NOTE: OTHER TYPES OF KAWNEER DOORS MAY BE USED WITH THIS FRAMING SYSTEM.
SEE ENTRANCE DETAILS FOR ADDITIONAL INFORMATION.

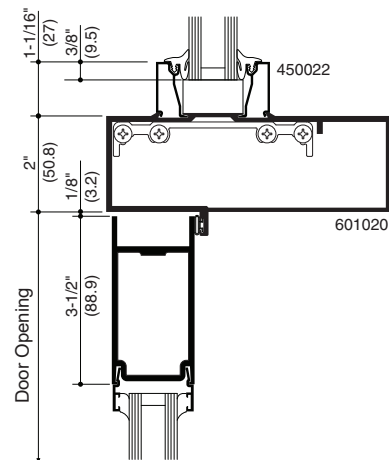


ELEVATION IS NUMBER KEYED TO DETAILS.

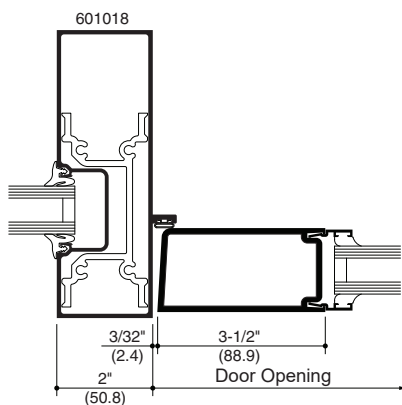
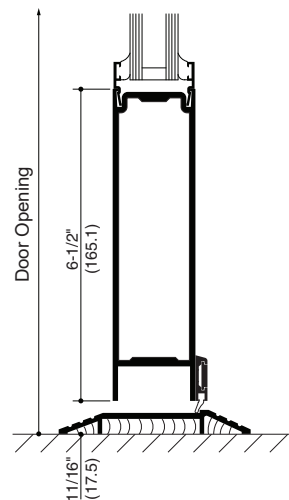
**1
HEAD**



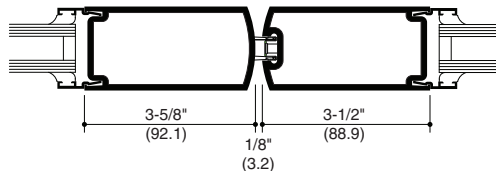
**2
TRANSOM
BAR**



**3
BOTTOM
RAIL**



**4
DOOR
JAMB**



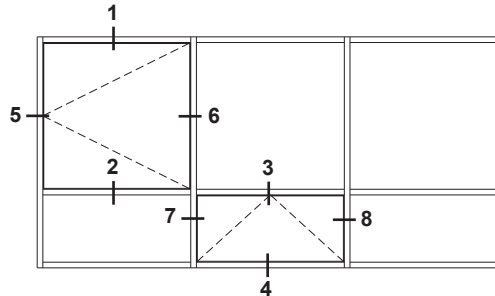
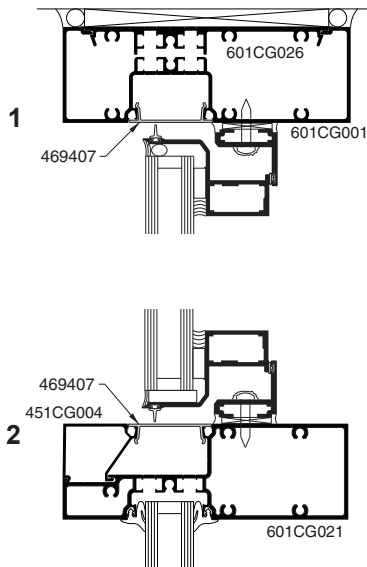
**5
MEETING
STILES**

350 MEDIUM STILE DOOR

Additional information and CAD details are available at www.kawneer.com

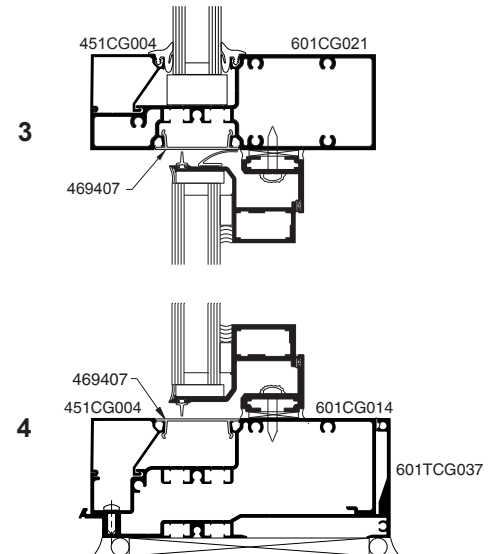
Trifab® VersaGlaze® 601 FRAMING SHOWN.
OTHER FRAMING OPTIONS AVAILABLE.
CONSULT YOUR KAWNEER REPRESENTATIVE.

OUTSWING CASEMENT VERTICAL SECTION

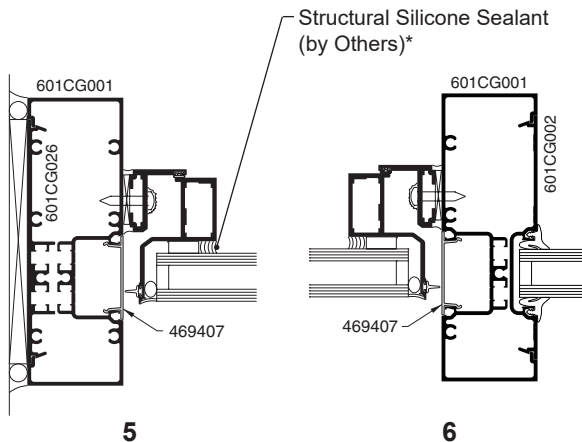


ELEVATION IS NUMBER KEYED TO DETAILS

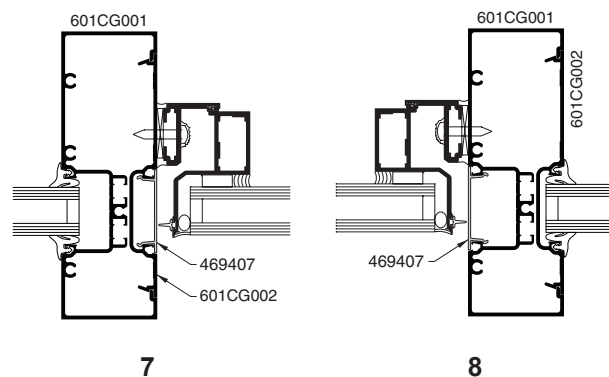
PROJECT-OUT VERTICAL SECTION



OUTSWING CASEMENT HORIZONTAL SECTION



PROJECT-OUT HORIZONTAL SECTION



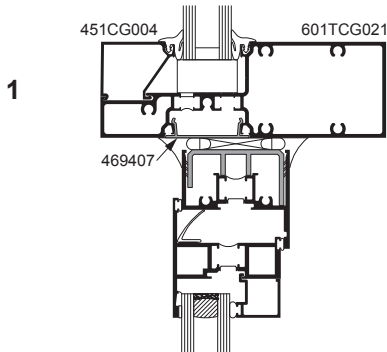
NOTE: Black spacer is recommended when 1" (25.4) insulating glass is used.

* **INSTALLER NOTE:** Installer is responsible for all required compatibility review and approvals with the Structural Silicone Manufacturer and the Insulating Glass Unit Manufacturer.

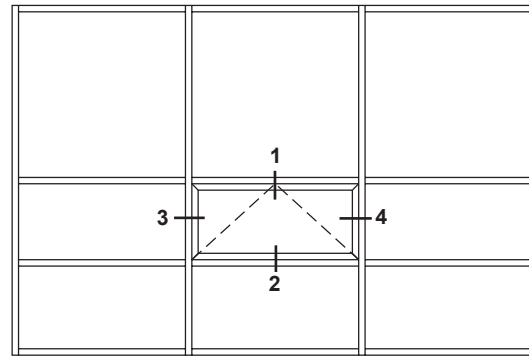
Additional information and CAD details are available at www.kawneer.com

Trifab® VersaGlaze® 601T FRAMING SHOWN.
OTHER FRAMING OPTIONS AVAILABLE.
CONSULT YOUR KAWNEER REPRESENTATIVE.

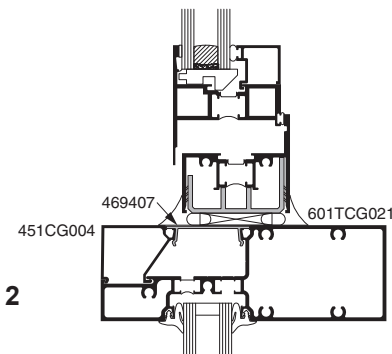
PROJECT-OUT VERTICAL SECTION



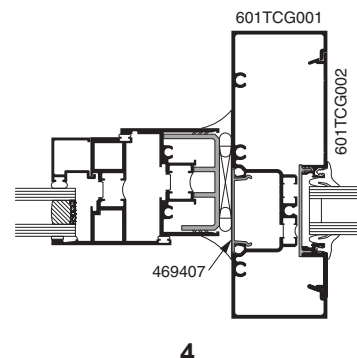
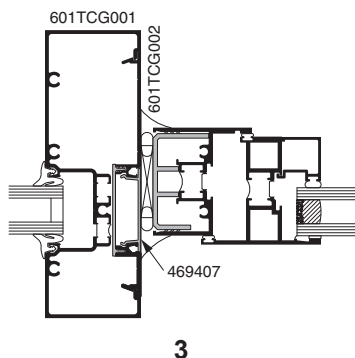
8225TL THERMAL WINDOWS SHOWN
NOTE: OTHER VENT TYPES CAN BE
ACCOMMODATED, CONSULT YOUR KAWNEER
REPRESENTATIVE FOR OTHER OPTIONS



ELEVATION IS NUMBER KEYED TO DETAILS



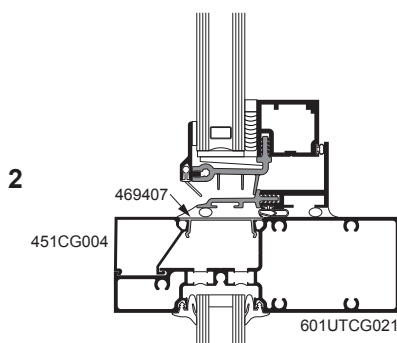
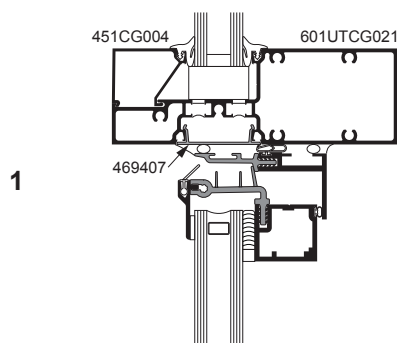
PROJECT-OUT HORIZONTAL SECTION



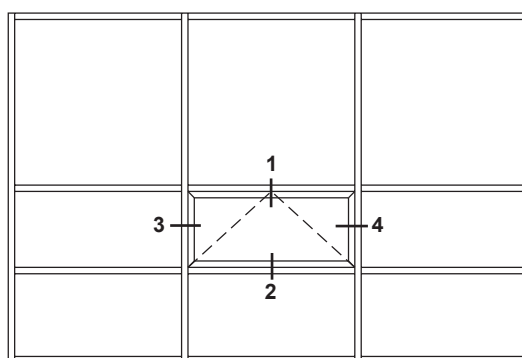
Additional information and CAD details are available at www.kawneer.com

Trifab® VersaGlaze® 601UT FRAMING SHOWN.
OTHER FRAMING OPTIONS AVAILABLE.
CONSULT YOUR KAWNEER REPRESENTATIVE.

PROJECT-OUT VERTICAL SECTION



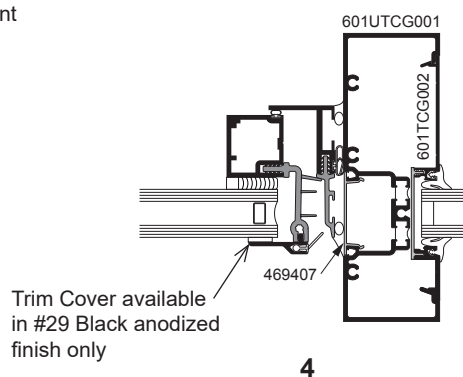
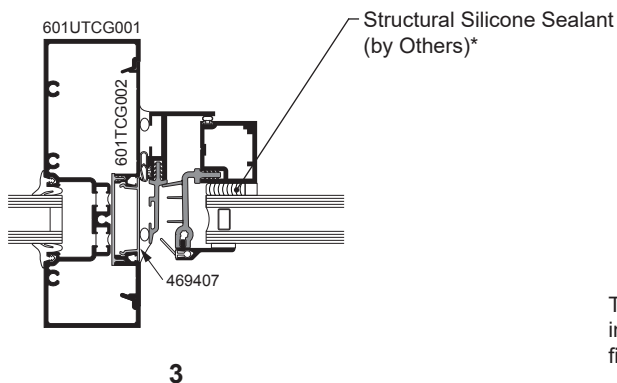
GLASSvent® UT WINDOWS SHOWN
NOTE: OTHER VENT TYPES CAN BE
ACCOMMODATED, CONSULT YOUR KAWNEER
REPRESENTATIVE FOR OTHER OPTIONS



ELEVATION IS NUMBER KEYED TO DETAILS

NOTE: Black spacer is recommended when
1" (25.4) insulating glass is used.

PROJECT-OUT HORIZONTAL SECTION

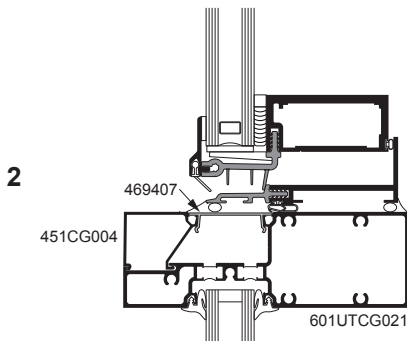
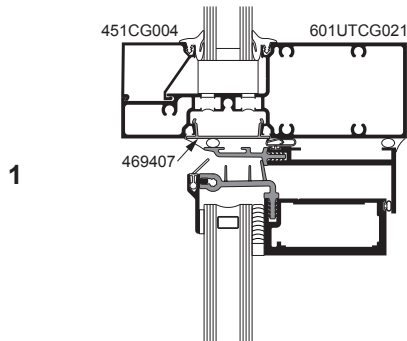


* **INSTALLER NOTE:** Installer is responsible for all required compatibility review and approvals with the Structural Silicone Manufacturer and the Insulating Glass Unit Manufacturer.

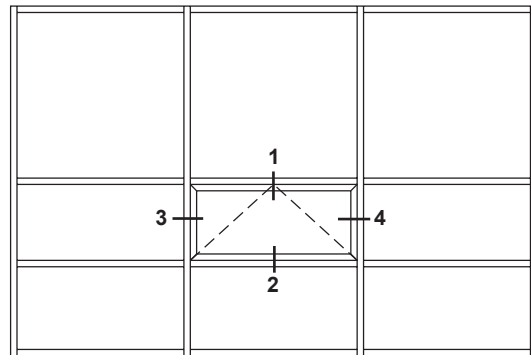
Additional information and CAD details are available at www.kawneer.com

Trifab® VersaGlaze® 601UT FRAMING SHOWN.
OTHER FRAMING OPTIONS AVAILABLE.
CONSULT YOUR KAWNEER REPRESENTATIVE.

PROJECT-OUT VERTICAL SECTION



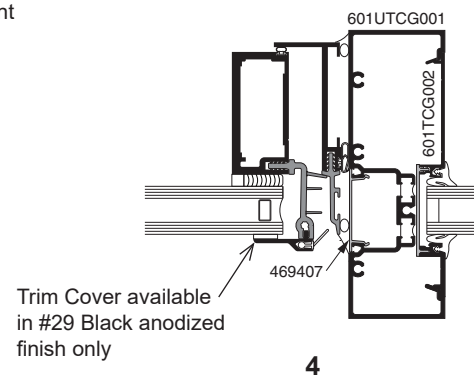
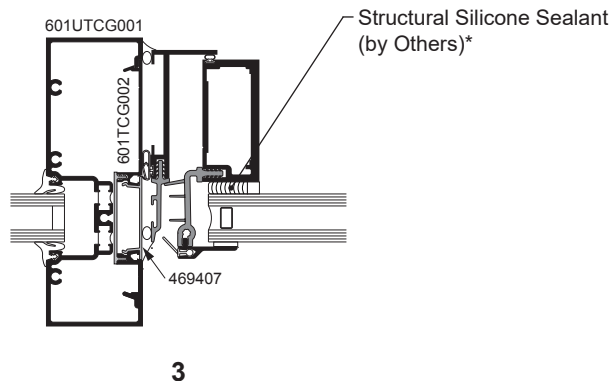
GLASSvent® UT WINDOWS SHOWN
NOTE: OTHER VENT TYPES CAN BE
ACCOMMODATED, CONSULT YOUR KAWNEER
REPRESENTATIVE FOR OTHER OPTIONS



ELEVATION IS NUMBER KEYED TO DETAILS

NOTE: Black spacer is recommended when
1" (25.4) insulating glass is used.

PROJECT-OUT HORIZONTAL SECTION



* **INSTALLER NOTE:** Installer is responsible for all required compatibility review and approvals with the Structural Silicone Manufacturer and the Insulating Glass Unit Manufacturer.

WIND LOAD CHARTS

Mullions are designed for deflection limitations in accordance with AAMA TIR-A11 of L/175 up to 13' 6" and L/240 + 1/4" above 13' 6". These curves are for mullions WITH HORIZONTALS and are based on engineering calculations for stress and deflection. Allowable wind load stress for ALUMINUM 15,152 psi (104 MPa), STEEL 30,000 psi (207 MPa). Charted curves, in all cases are for the limiting value. Wind load charts contained herein are based upon nominal wind load utilized in allowable stress design. A conversion from Load Resistance Factor Design (LRFD) is provided. To convert ultimate wind loads to nominal loads, multiply ultimate wind loads by a factor of 0.6 per ASCE/SEI 7. A 4/3 increase in allowable stress has not been used to develop these curves. For special situations not covered by these curves, contact your Kawneer representative for additional information.

If the end reaction of the mullion [mullion spacing (ft.) times height (ft.) times specified wind load (psf) divided by two] is more than 500 lbs., the optional Mullion Anchors must be used. Consult Application Engineering. (*Mullion Anchor not used with Lightweight Receptor.*)

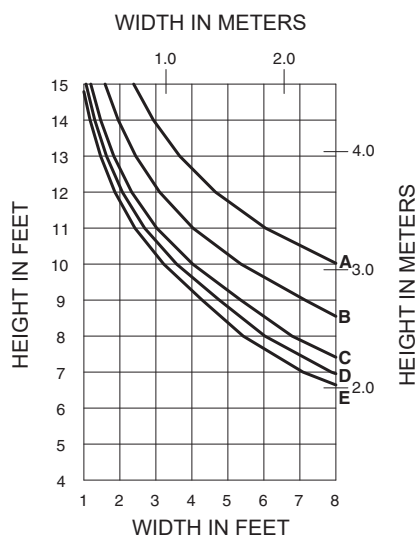
DEADLOAD CHARTS

Horizontal or deadload limitations are based upon 1/8" (3.2), maximum allowable deflection at the center of an intermediate horizontal member. The accompanying charts are calculated for 1" (25.4) thick insulating glass or 1/4" (6.35) thick glass supported on two setting blocks placed at the loading points shown.

Laws and building and safety codes governing the design and use of Kawneer products, such as glazed entrance, window, and curtain wall products, vary widely. Kawneer does not control the selection of product configurations, operating hardware, or glazing materials, and assumes no responsibility therefor.

Kawneer reserves the right to change configuration without prior notice when deemed necessary for product improvement.
© 2013, Kawneer Company, Inc.

WITH HORIZONTALS



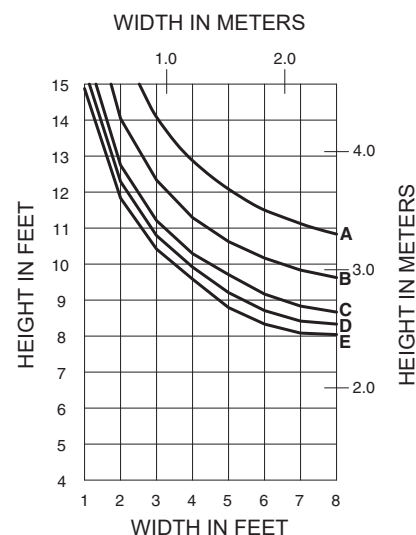
	Allowable Stress Design Load	LRFD Ultimate Design Load
A =	20 PSF (960)	33 PSF (1580)
B =	30 PSF (1440)	50 PSF (2400)
C =	40 PSF (1920)	67 PSF (3200)
D =	45 PSF (2160)	75 PSF (3600)
E =	50 PSF (2400)	83 PSF (4000)
F =	60 PSF (2880)	100 PSF (4790)



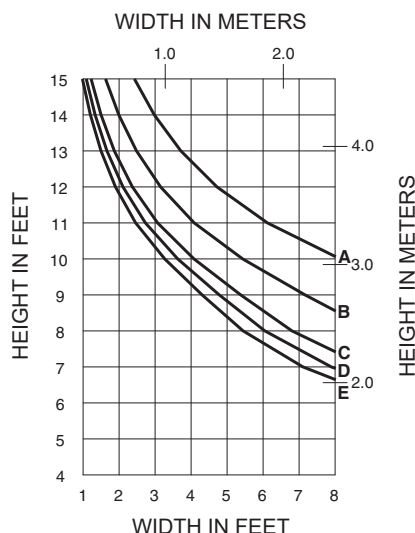
601CG001

$I = 5.431 (226.05 \times 10^4)$
 $S = 1.717 (28.14 \times 10^3)$

WITHOUT HORIZONTALS



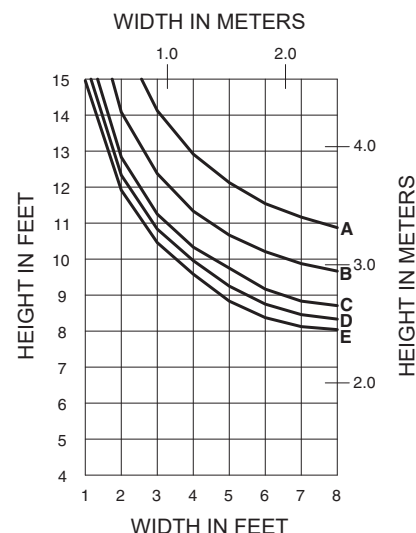
WITH HORIZONTALS



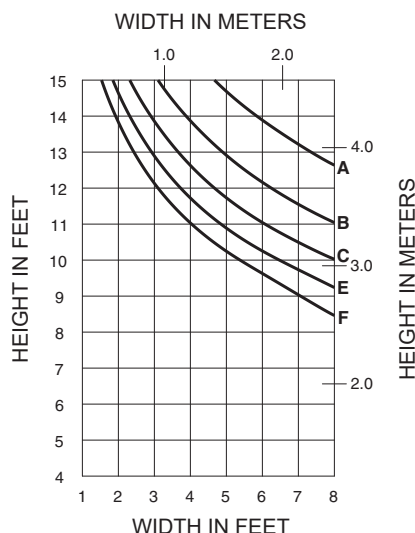
601CG112

$I = 5.495 (228.72 \times 10^4)$
 $S = 1.727 (28.30 \times 10^3)$

WITHOUT HORIZONTALS



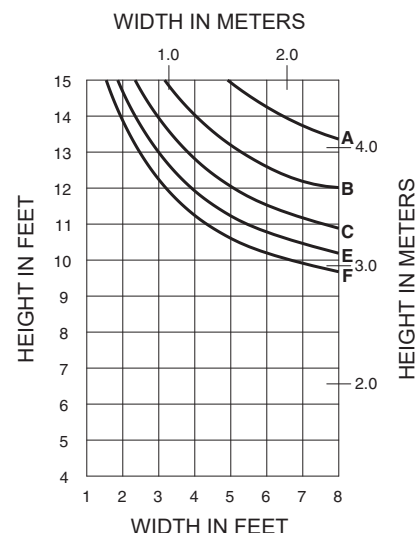
WITH HORIZONTALS



601CG013

$I_A = 10.593 (440.91 \times 10^4)$
 $S_A = 3.411 (55.90 \times 10^3)$

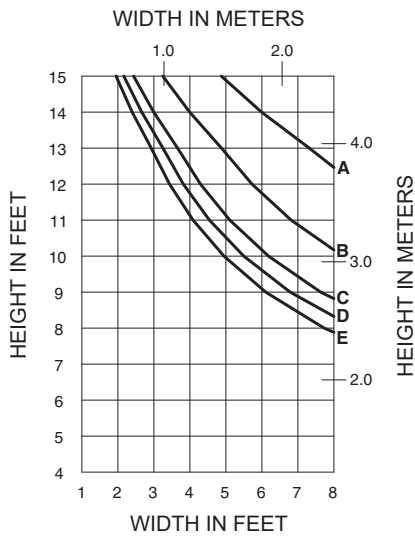
WITHOUT HORIZONTALS



Laws and building and safety codes governing the design and use of Kawneer products, such as glazed entrance, window, and curtain wall products, vary widely. Kawneer does not control the selection of product configurations, operating hardware, or glazing materials, and assumes no responsibility therefor.

Kawneer reserves the right to change configuration without prior notice when deemed necessary for product improvement.
 © 2013, Kawneer Company, Inc.

WITH HORIZONTALS



	Allowable Stress Design Load	LRFD Ultimate Design Load
A =	20 PSF (960)	33 PSF (1580)
B =	30 PSF (1440)	50 PSF (2400)
C =	40 PSF (1920)	67 PSF (3200)
D =	45 PSF (2160)	75 PSF (3600)
E =	50 PSF (2400)	83 PSF (4000)



601CG112

WITH 450110 STEEL

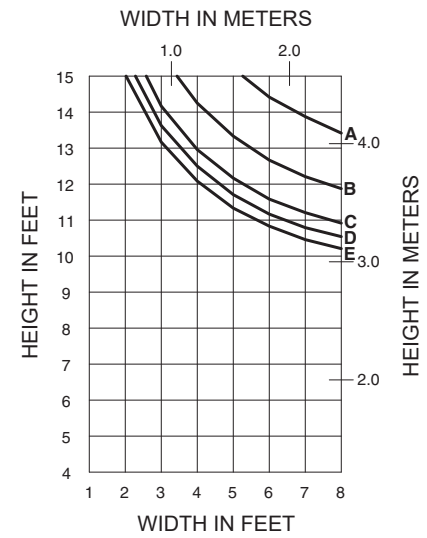
$$I_A = 5.495 (228.72 \times 10^4)$$

$$S_A = 1.727 (28.30 \times 10^3)$$

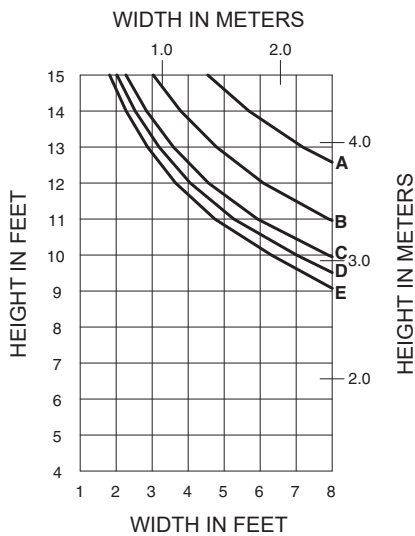
$$I_S = 1.929 (80.29 \times 10^4)$$

$$S_S = 0.935 (15.32 \times 10^3)$$

WITHOUT HORIZONTALS



WITH HORIZONTALS

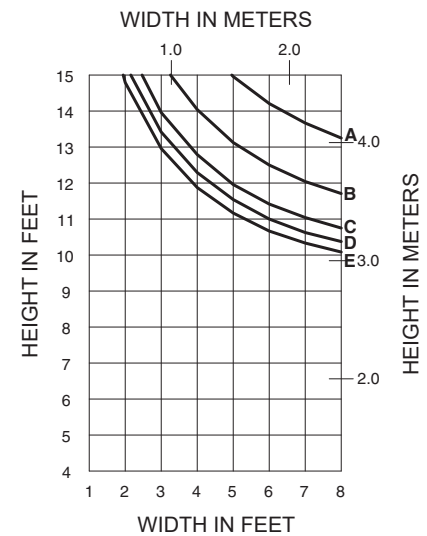


601CG010

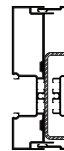
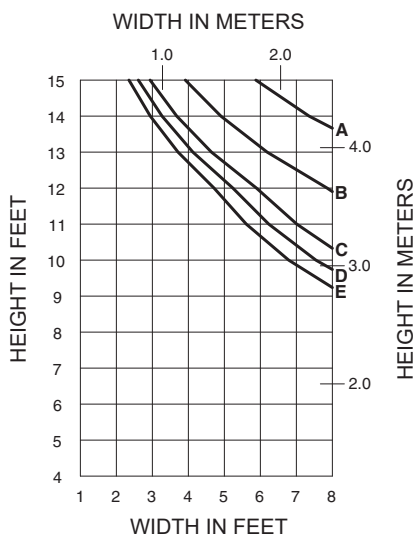
$$I = 10.570 (439.95 \times 10^4)$$

$$S = 3.406 (55.81 \times 10^3)$$

WITHOUT HORIZONTALS



WITH HORIZONTALS



601CG010

WITH 400110 STEEL

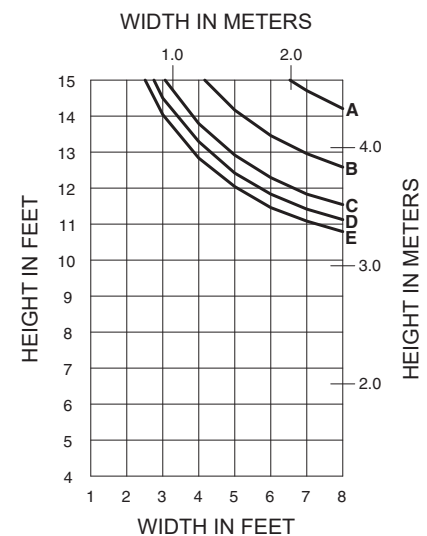
$$I_A = 10.570 (439.95 \times 10^4)$$

$$S_A = 3.406 (55.81 \times 10^3)$$

$$I_S = 0.970 (40.37 \times 10^4)$$

$$S_S = 0.535 (8.77 \times 10^3)$$

WITHOUT HORIZONTALS

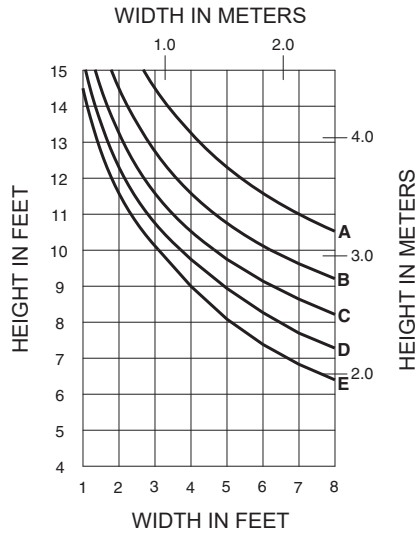


Laws and building and safety codes governing the design and use of Kawneer products, such as glazed entrance, window, and curtain wall products, vary widely. Kawneer does not control the selection of product configurations, operating hardware, or glazing materials, and assumes no responsibility therefor.

Kawneer reserves the right to change configuration without prior notice when deemed necessary for product improvement.

© 2013, Kawneer Company, Inc.

WITH HORIZONTALS



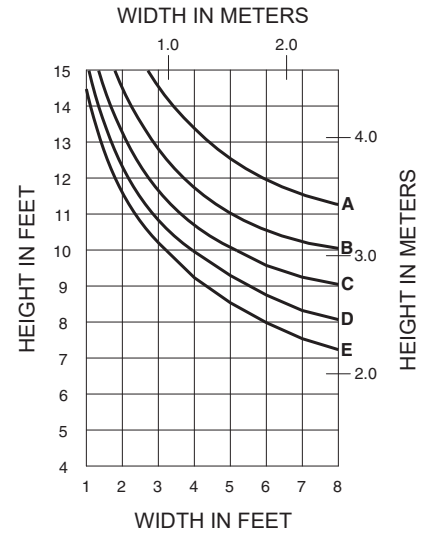
	Allowable Stress Design Load	LRFD Ultimate Design Load
A =	20 PSF (960)	33 PSF (1580)
B =	30 PSF (1440)	50 PSF (2400)
C =	40 PSF (1920)	67 PSF (3200)
D =	50 PSF (2400)	83 PSF (4000)
E =	60 PSF (2880)	100 PSF (4790)



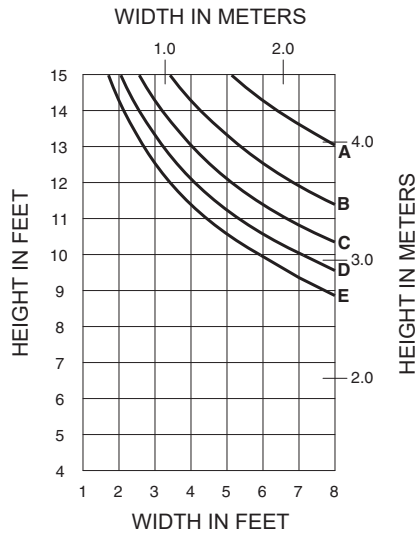
601CG005

$I = 6.092 (253.57 \times 10^4)$
 $S = 1.944 (31.86 \times 10^3)$

WITHOUT HORIZONTALS



WITH HORIZONTALS



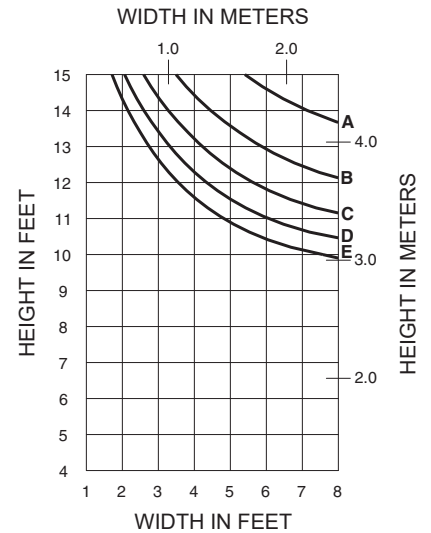
601CG005

WITH 450110 STEEL

$I_A = 6.092 (253.57 \times 10^4)$
 $S_A = 1.944 (31.86 \times 10^3)$

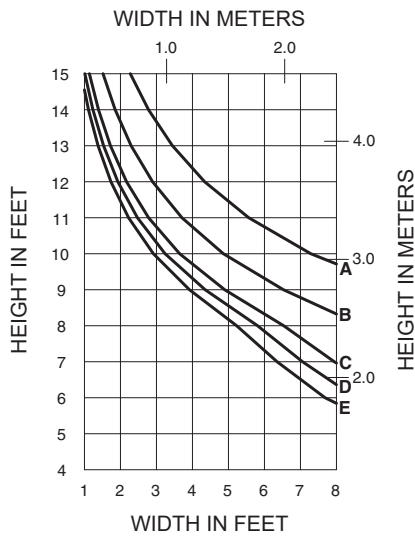
$I_S = 1.929 (80.29 \times 10^4)$
 $S_S = 0.935 (15.32 \times 10^3)$

WITHOUT HORIZONTALS

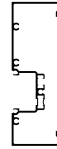


Laws and building and safety codes governing the design and use of Kawneer products, such as glazed entrance, window, and curtain wall products, vary widely. Kawneer does not control the selection of product configurations, operating hardware, or glazing materials, and assumes no responsibility therefor.

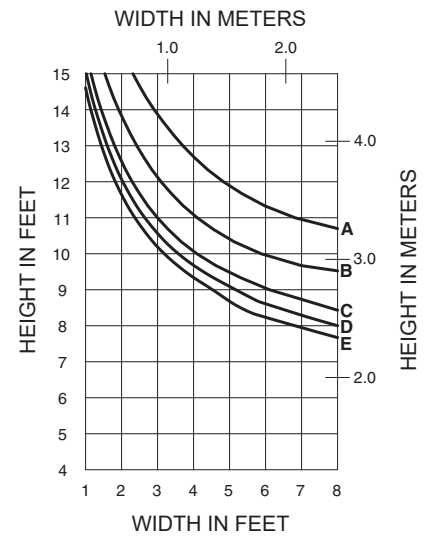
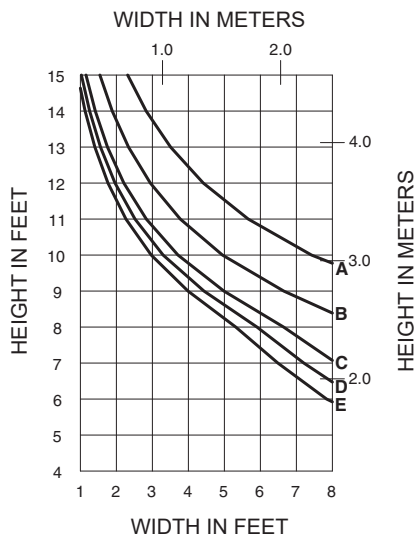
Kawneer reserves the right to change configuration without prior notice when deemed necessary for product improvement.
© 2013, Kawneer Company, Inc.

WITH HORIZONTALS

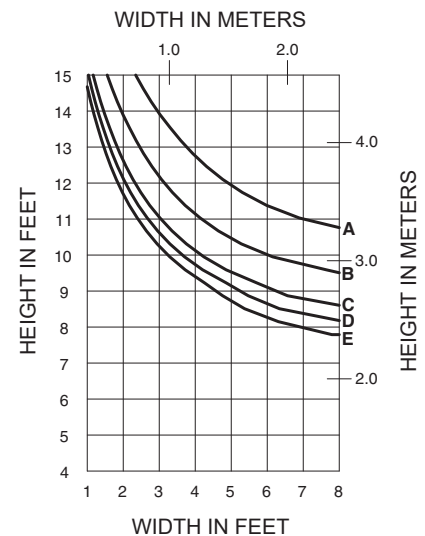
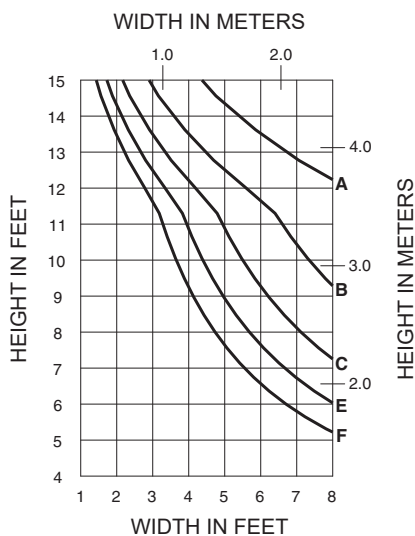
	Allowable Stress Design Load	LRFD Ultimate Design Load
A =	20 PSF (960)	33 PSF (1580)
B =	30 PSF (1440)	50 PSF (2400)
C =	40 PSF (1920)	67 PSF (3200)
D =	45 PSF (2160)	75 PSF (3600)
E =	50 PSF (2400)	83 PSF (4000)
F =	60 PSF (2880)	100 PSF (4790)

**601TCG001**

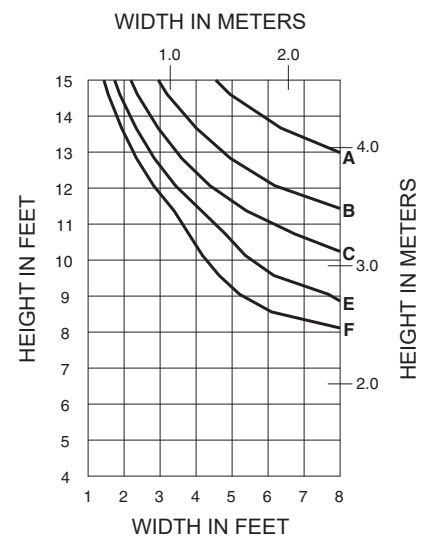
WIND LOAD CHARTS ARE BASED ON COMPOSITE PROPERTIES WHICH ARE CALCULATED IN ACCORDANCE WITH AAMA TIR-8 AND AAMA 505

WITHOUT HORIZONTALS**WITH HORIZONTALS****601TCG112**

WIND LOAD CHARTS ARE BASED ON COMPOSITE PROPERTIES WHICH ARE CALCULATED IN ACCORDANCE WITH AAMA TIR-8 AND AAMA 505

WITHOUT HORIZONTALS**WITH HORIZONTALS****601TCG013**

WIND LOAD CHARTS ARE BASED ON COMPOSITE PROPERTIES WHICH ARE CALCULATED IN ACCORDANCE WITH AAMA TIR-8 AND AAMA 505

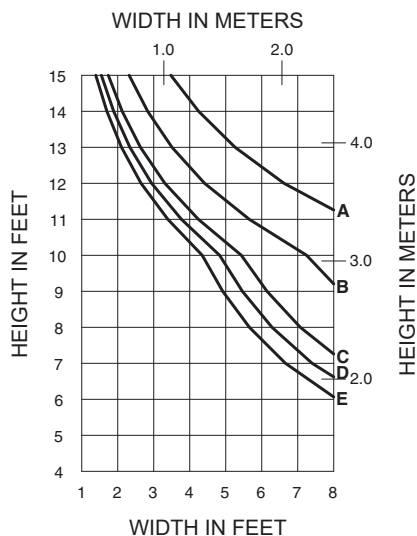
WITHOUT HORIZONTALS

Laws and building and safety codes governing the design and use of Kawneer products, such as glazed entrance, window, and curtain wall products, vary widely. Kawneer does not control the selection of product configurations, operating hardware, or glazing materials, and assumes no responsibility therefor.

Kawneer reserves the right to change configuration without prior notice when deemed necessary for product improvement.

© 2013, Kawneer Company, Inc.

WITH HORIZONTALS



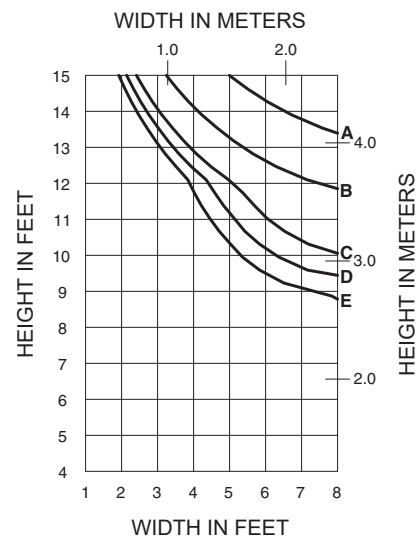
	Allowable Stress Design Load	LRFD Ultimate Design Load
A =	20 PSF (960)	33 PSF (1580)
B =	30 PSF (1440)	50 PSF (2400)
C =	40 PSF (1920)	67 PSF (3200)
D =	45 PSF (2160)	75 PSF (3600)
E =	50 PSF (2400)	83 PSF (4000)



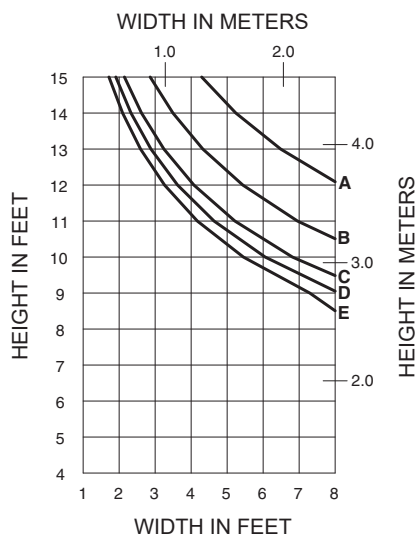
**601TCG112
WITH 450110 STEEL**

WIND LOAD CHARTS ARE BASED ON COMPOSITE PROPERTIES WHICH ARE CALCULATED IN ACCORDANCE WITH AAMA TIR-8 AND AAMA 505

WITHOUT HORIZONTALS



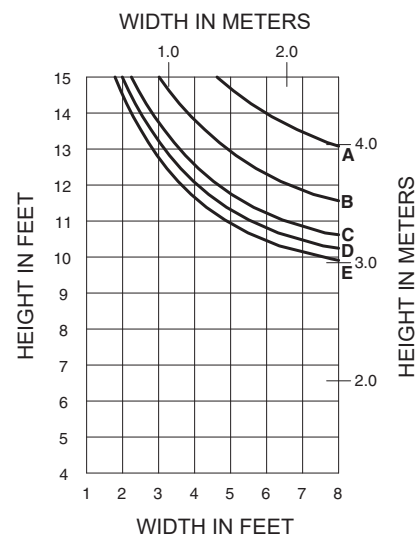
WITH HORIZONTALS



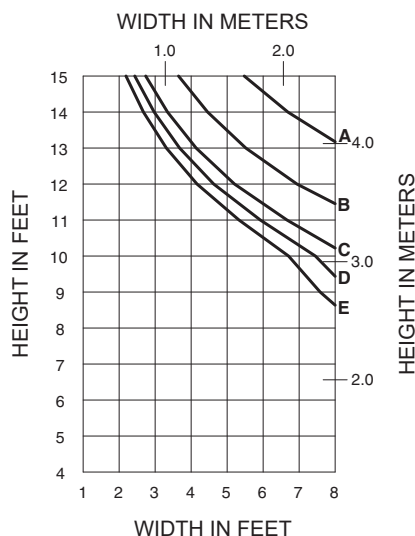
601TCG010

WIND LOAD CHARTS ARE BASED ON COMPOSITE PROPERTIES WHICH ARE CALCULATED IN ACCORDANCE WITH AAMA TIR-8 AND AAMA 505

WITHOUT HORIZONTALS



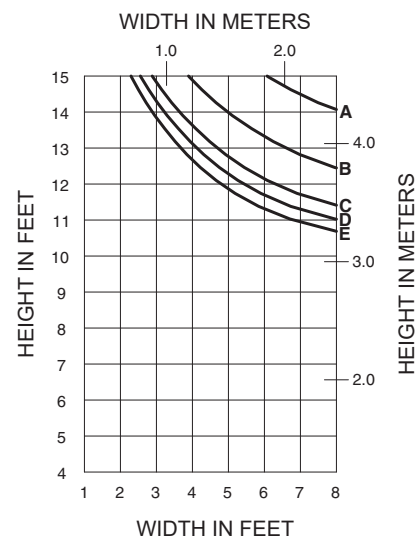
WITH HORIZONTALS



**601TCG010
WITH 400110 STEEL**

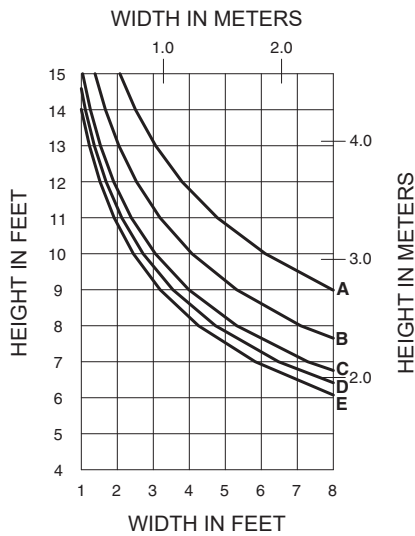
WIND LOAD CHARTS ARE BASED ON COMPOSITE PROPERTIES WHICH ARE CALCULATED IN ACCORDANCE WITH AAMA TIR-8 AND AAMA 505

WITHOUT HORIZONTALS

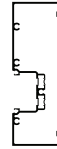


Laws and building and safety codes governing the design and use of Kawneer products, such as glazed entrance, window, and curtain wall products, vary widely. Kawneer does not control the selection of product configurations, operating hardware, or glazing materials, and assumes no responsibility therefor.

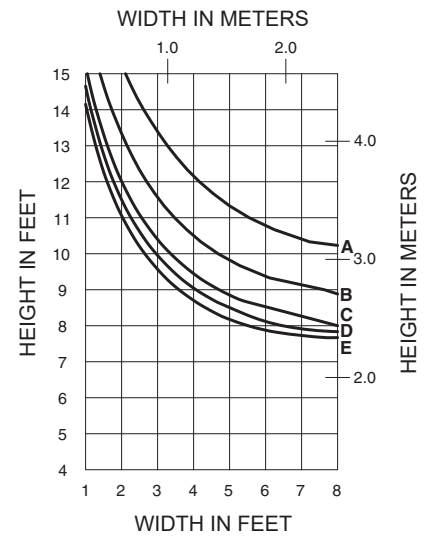
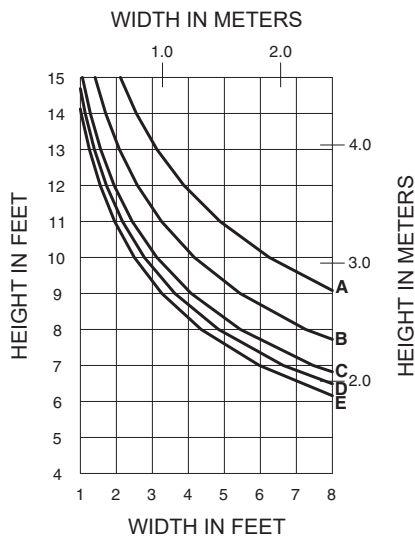
Kawneer reserves the right to change configuration without prior notice when deemed necessary for product improvement.
© 2013, Kawneer Company, Inc.

WITH HORIZONTALS

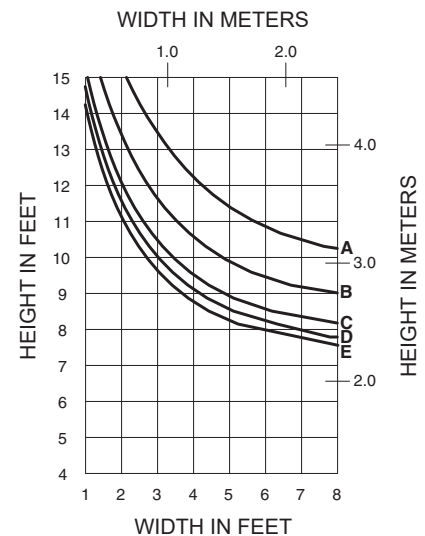
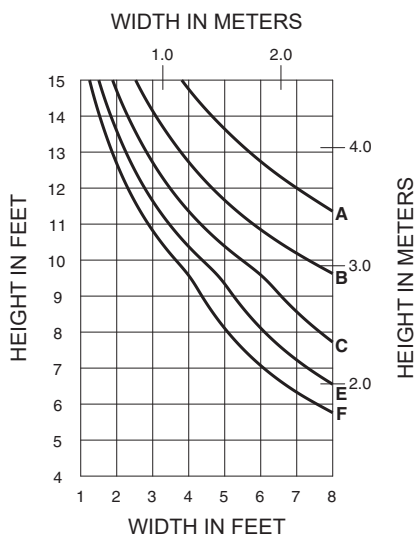
	Allowable Stress Design Load	LRFD Ultimate Design Load
A =	20 PSF (960)	33 PSF (1580)
B =	30 PSF (1440)	50 PSF (2400)
C =	40 PSF (1920)	67 PSF (3200)
D =	45 PSF (2160)	75 PSF (3600)
E =	50 PSF (2400)	83 PSF (4000)
F =	60 PSF (2880)	100 PSF (4790)

**601UTCG001**

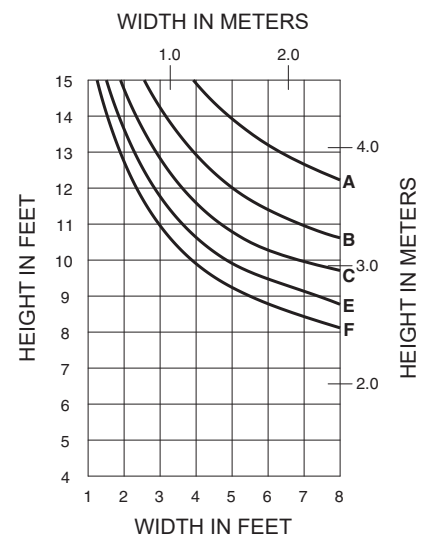
WIND LOAD CHARTS ARE BASED ON COMPOSITE PROPERTIES WHICH ARE CALCULATED IN ACCORDANCE WITH AAMA TIR-8 AND AAMA 505

WITHOUT HORIZONTALS**WITH HORIZONTALS****601UTCG112**

WIND LOAD CHARTS ARE BASED ON COMPOSITE PROPERTIES WHICH ARE CALCULATED IN ACCORDANCE WITH AAMA TIR-8 AND AAMA 505

WITHOUT HORIZONTALS**WITH HORIZONTALS****601UTCG013**

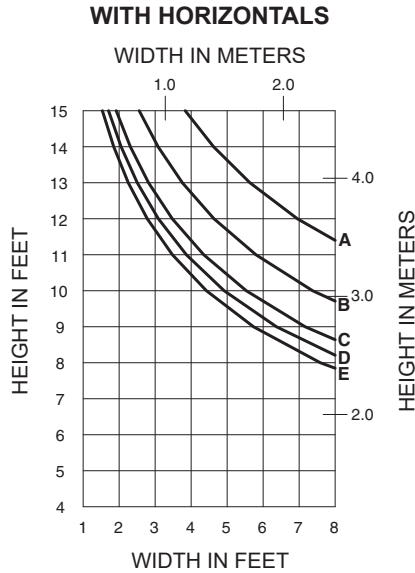
WIND LOAD CHARTS ARE BASED ON COMPOSITE PROPERTIES WHICH ARE CALCULATED IN ACCORDANCE WITH AAMA TIR-8 AND AAMA 505

WITHOUT HORIZONTALS

Laws and building and safety codes governing the design and use of Kawneer products, such as glazed entrance, window, and curtain wall products, vary widely. Kawneer does not control the selection of product configurations, operating hardware, or glazing materials, and assumes no responsibility therefor.

Kawneer reserves the right to change configuration without prior notice when deemed necessary for product improvement.

© 2013, Kawneer Company, Inc.

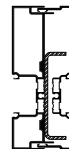
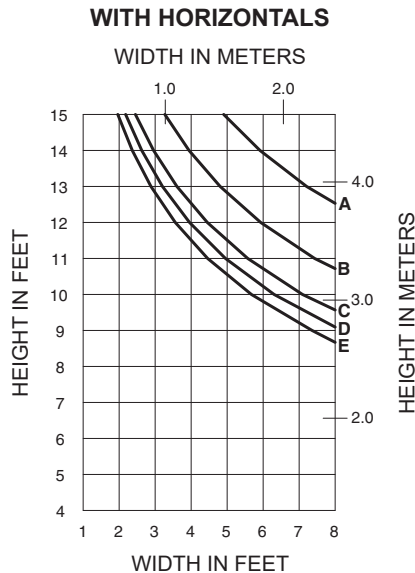
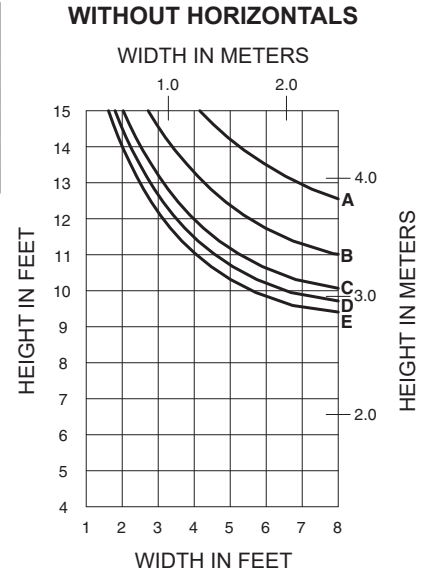


	Allowable Stress Design Load	LRFD Ultimate Design Load
A =	20 PSF (960)	33 PSF (1580)
B =	30 PSF (1440)	50 PSF (2400)
C =	40 PSF (1920)	67 PSF (3200)
D =	45 PSF (2160)	75 PSF (3600)
E =	50 PSF (2400)	83 PSF (4000)



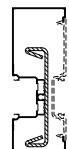
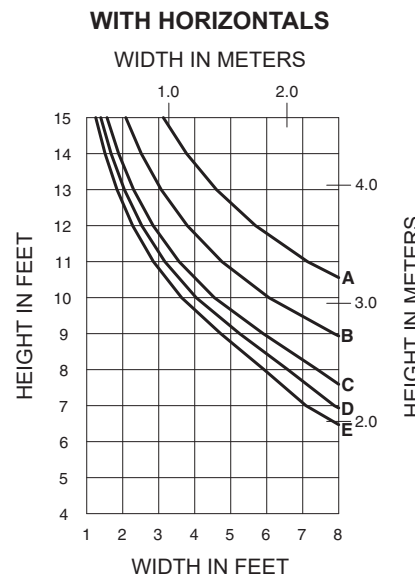
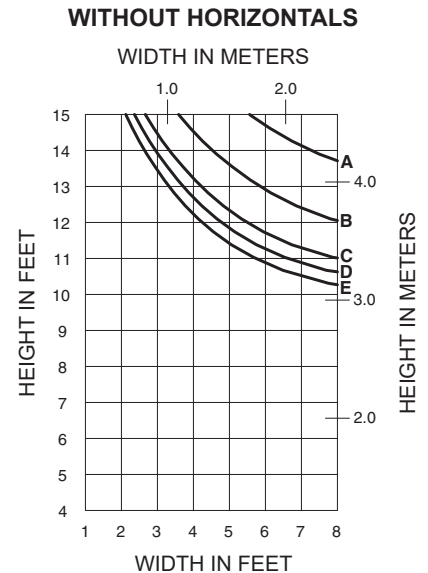
601UTCG010

WIND LOAD CHARTS ARE BASED ON COMPOSITE PROPERTIES WHICH ARE CALCULATED IN ACCORDANCE WITH AAMA TIR-8 AND AAMA 505



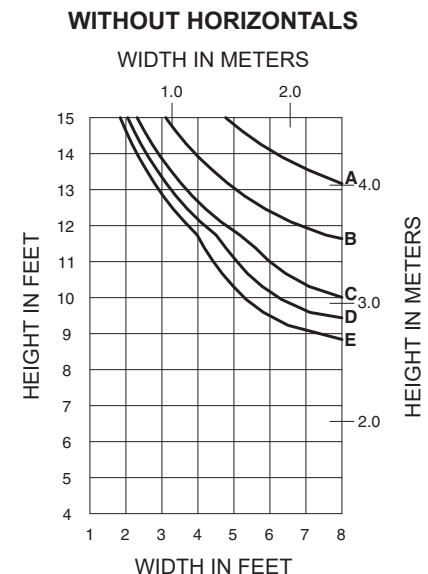
601UTCG010
WITH 400110 STEEL

WIND LOAD CHARTS ARE BASED ON COMPOSITE PROPERTIES WHICH ARE CALCULATED IN ACCORDANCE WITH AAMA TIR-8 AND AAMA 505



601UTCG112
WITH 450110 STEEL

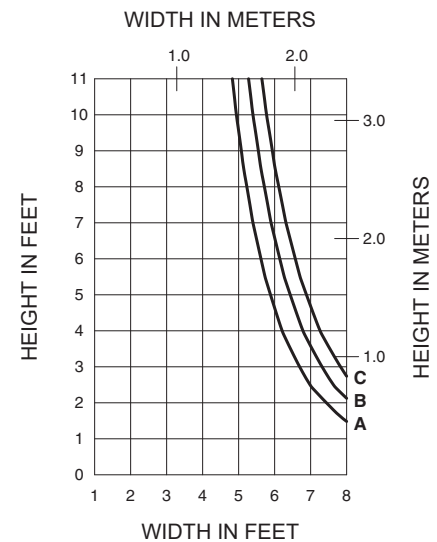
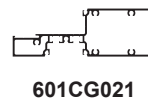
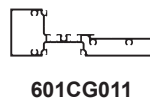
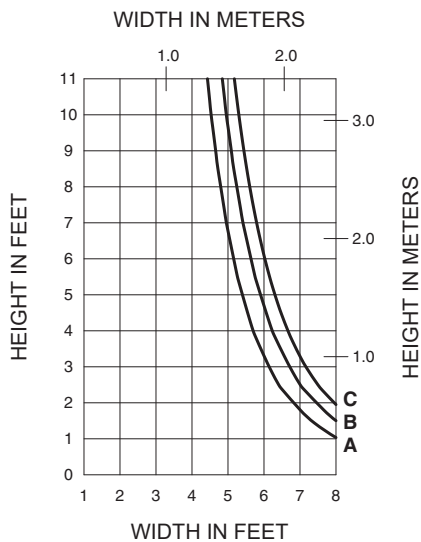
WIND LOAD CHARTS ARE BASED ON COMPOSITE PROPERTIES WHICH ARE CALCULATED IN ACCORDANCE WITH AAMA TIR-8 AND AAMA 505



Laws and building and safety codes governing the design and use of Kawneer products, such as glazed entrance, window, and curtain wall products, vary widely. Kawneer does not control the selection of product configurations, operating hardware, or glazing materials, and assumes no responsibility therefor.

Kawneer reserves the right to change configuration without prior notice when deemed necessary for product improvement.
© 2013, Kawneer Company, Inc.

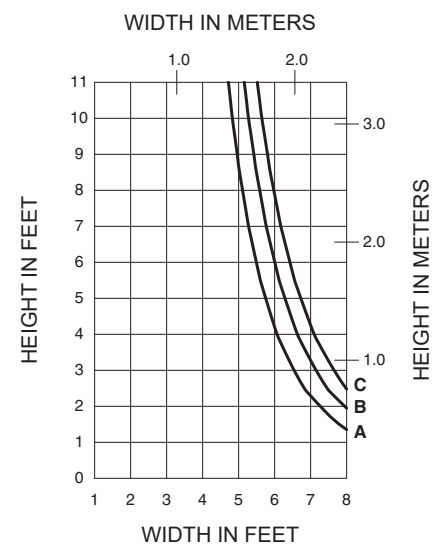
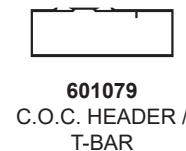
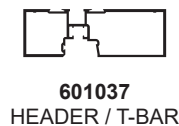
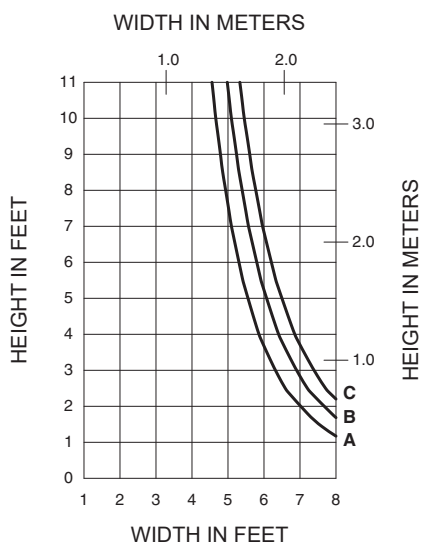
A = (1/4 POINT LOADING)
 B = (1/6 POINT LOADING)
 C = (1/8 POINT LOADING)



DEADLOAD ON TRANSOM BAR

Height limitations for transom glass over a doorway are based on a 1/16" (1.6) maximum allowable deflection at the mid-point of a transom bar. The accompanying charts are calculated for 1" (25.4) thick insulating glass supported on two setting blocks placed at the loading points shown.

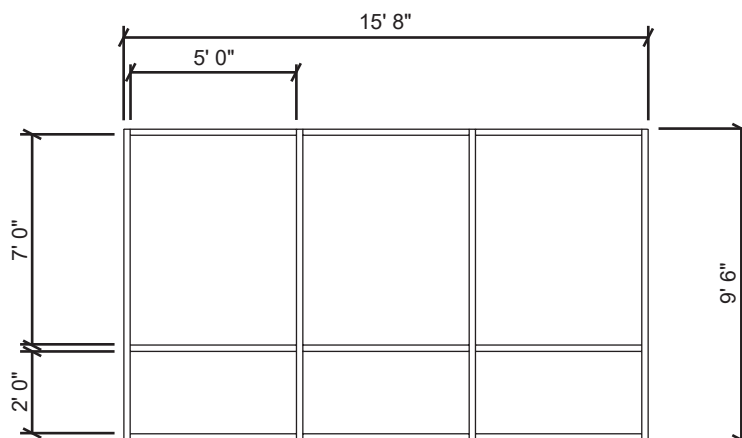
A = (1/4 POINT LOADING)
 B = (1/6 POINT LOADING)
 C = (1/8 POINT LOADING)



Laws and building and safety codes governing the design and use of Kawneer products, such as glazed entrance, window, and curtain wall products, vary widely. Kawneer does not control the selection of product configurations, operating hardware, or glazing materials, and assumes no responsibility therefor.

Kawneer reserves the right to change configuration without prior notice when deemed necessary for product improvement.
 © 2013, Kawneer Company, Inc.

Generic Project Specific U-factor Example Calculation
 (Percent of Glass will vary on specific products depending on sitelines)



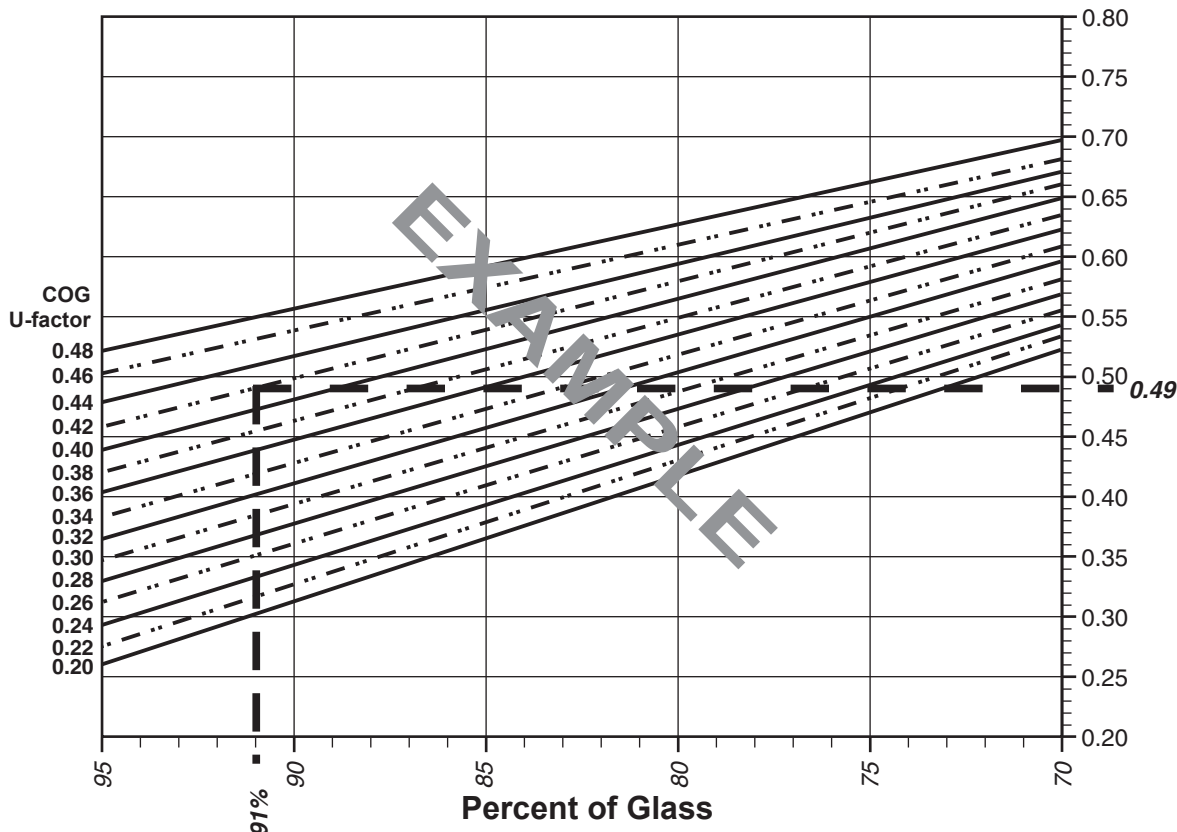
Example Glass U-factor = 0.42 Btu/hr·ft²·°F

Total Daylight Opening = 3(5' x 7') + 3(5' x 2') = 135ft²

Total Projected Area = (Total Daylight Opening + Total Area of Framing System)
 = 15' 8" x 9' 6" = 148.83ft²

Percent of Glass = (Total Daylight Opening ÷ Total Projected Area)
 = (135 ÷ 148.83)100 = 91%

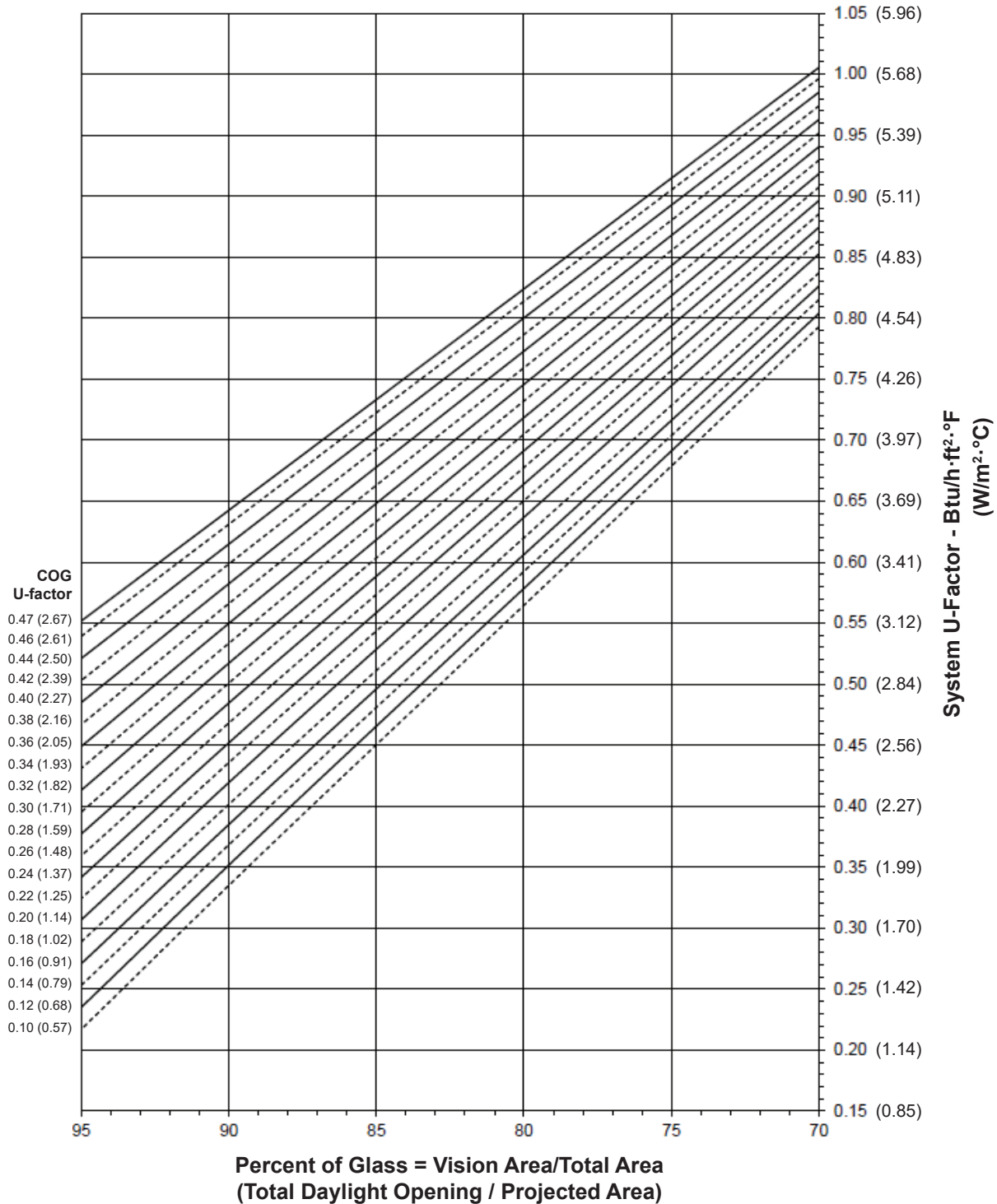
System U-factor vs Percent of Glass Area



Based on 91% glass and center of glass (COG) U-factor of 0.42
System U-factor is equal to 0.49 Btu/hr x ft² x °F

Note:
Values in parentheses are metric.
COG=Center of Glass.
Charts are generated per AAMA 507.

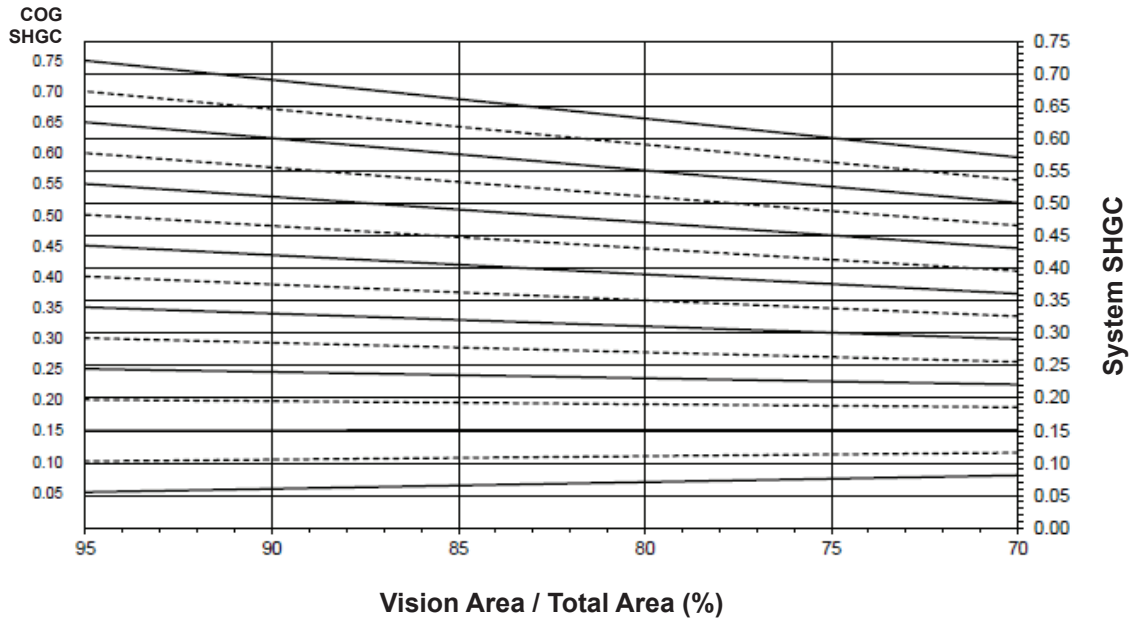
Trifab® VersaGlaze® 601
1" Double Glazed - Aluminum Glazing Spacer
System U-Factor for Vision Glass



Notes for System U-factor, SHGC and VT charts:

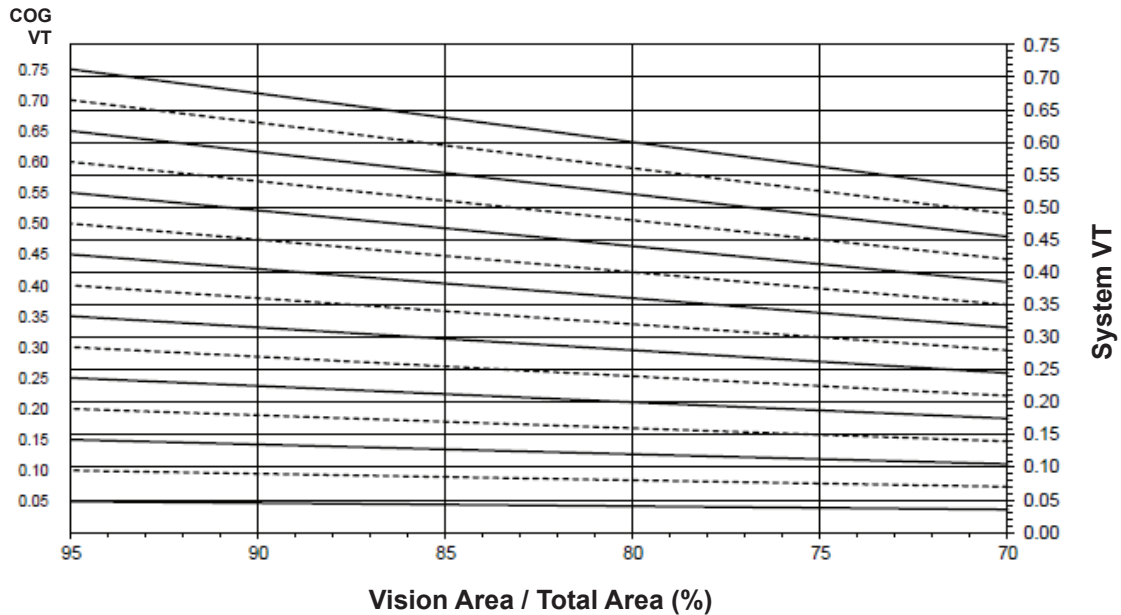
For glass values that are not listed, linear interpolation is permitted.
Glass properties are based on center of glass values and are obtained from your glass supplier.

Trifab® VersaGlaze® 601
1" Double Glazed - Aluminum Glazing Spacer
 System Solar Heat Gain Coefficient (SHGC) vs Percent of Vision Area



Charts are generated per AAMA 507.

System Visible Transmittance (VT) vs Percent of Vision Area



Charts are generated per AAMA 507.

Laws and building and safety codes governing the design and use of Kawneer products, such as glazed entrance, window, and curtain wall products, vary widely. Kawneer does not control the selection of product configurations, operating hardware, or glazing materials, and assumes no responsibility therefor.

Kawneer reserves the right to change configuration without prior notice when deemed necessary for product improvement.
 © 2013, Kawneer Company, Inc.

Thermal Transmittance¹ (BTU/hr • ft² • °F)

Glass U-Factor ³	Overall U-Factor ⁴
0.48	0.68
0.46	0.67
0.44	0.66
0.42	0.64
0.40	0.63
0.38	0.61
0.36	0.59
0.34	0.58
0.32	0.56
0.30	0.55
0.28	0.53
0.26	0.52
0.24	0.50
0.22	0.48
0.20	0.47
0.18	0.45
0.16	0.44
0.14	0.42
0.12	0.40
0.10	0.39

Trifab® VersaGlaze® 601
1" Double Glazed
Aluminum Glazing Spacer

NOTE: For glass values that are not listed, linear interpolation is permitted.

1. U-Factors are determined in accordance with NFRC 100.
2. SHGC and VT values are determined in accordance with NFRC 200.
3. Glass properties are based on center of glass values and are obtained from your glass supplier.
4. Overall U-Factor, SHGC, and VT Matrices are based on the standard NFRC specimen size of 2,000 mm wide by 2,000 mm high (78-3/4" by 78-3/4").

SHGC Matrix²

Glass SHGC ³	Overall SHGC ⁴
0.75	0.68
0.70	0.63
0.65	0.59
0.60	0.55
0.55	0.50
0.50	0.46
0.45	0.41
0.40	0.37
0.35	0.33
0.30	0.28
0.25	0.24
0.20	0.19
0.15	0.15
0.10	0.11
0.05	0.06

Visible Transmittance²

Glass VT ³	Overall VT ⁴
0.75	0.66
0.70	0.61
0.65	0.57
0.60	0.53
0.55	0.48
0.50	0.44
0.45	0.39
0.40	0.35
0.35	0.31
0.30	0.26
0.25	0.22
0.20	0.18
0.15	0.13
0.10	0.09
0.05	0.04

Laws and building and safety codes governing the design and use of Kawneer products, such as glazed entrance, window, and curtain wall products, vary widely. Kawneer does not control the selection of product configurations, operating hardware, or glazing materials, and assumes no responsibility therefor.

Kawneer reserves the right to change configuration without prior notice when deemed necessary for product improvement.
© 2013, Kawneer Company, Inc.

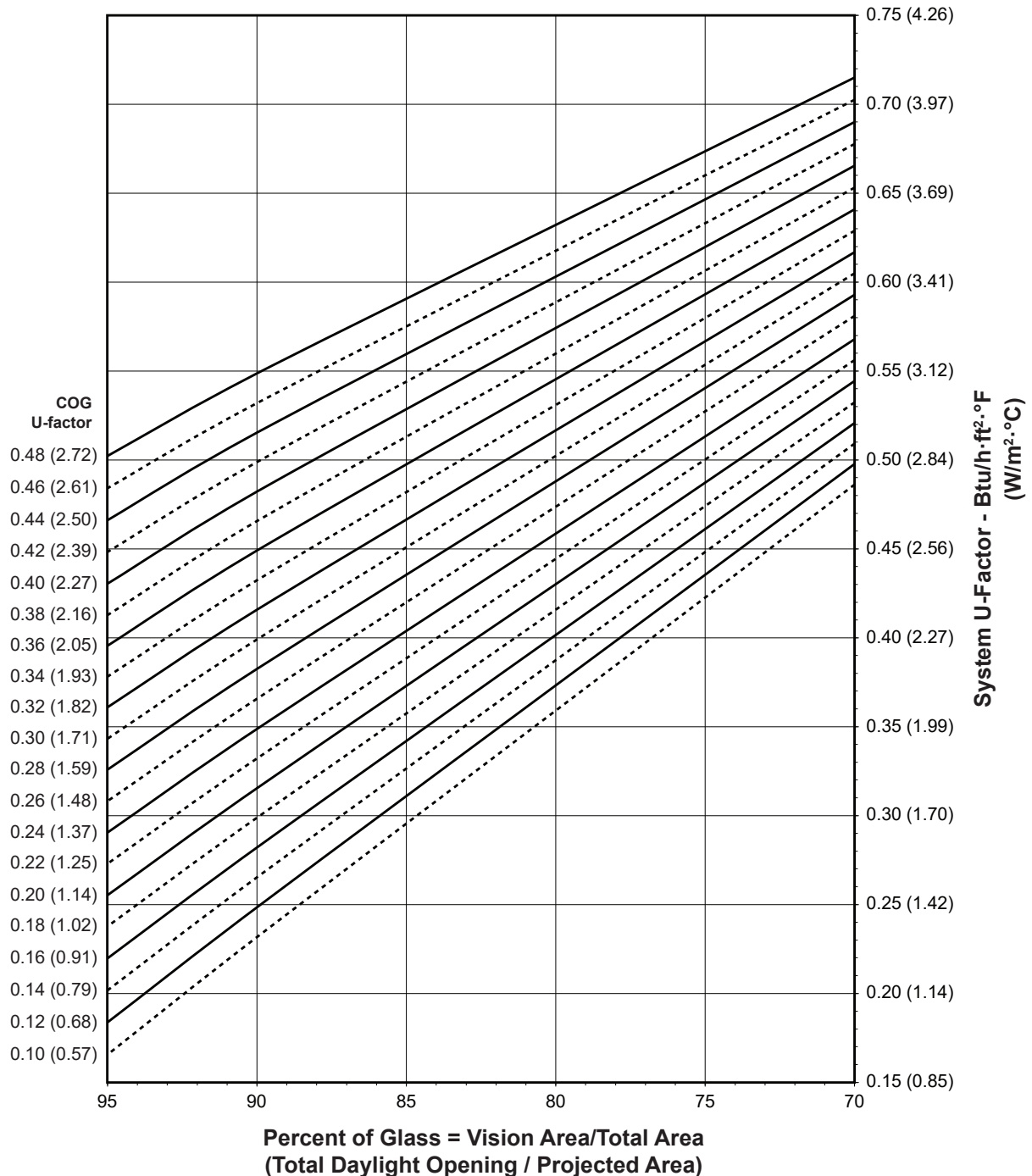
Note:

Values in parentheses are metric.

COG=Center of Glass.

Charts are generated per AAMA 507.

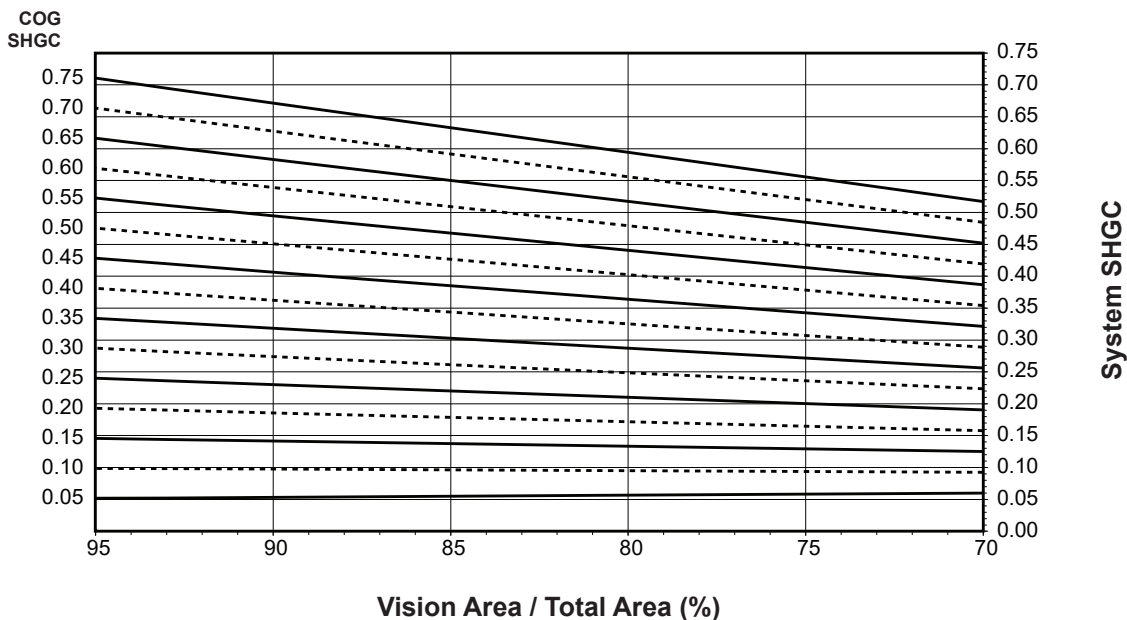
Trifab® VersaGlaze® 601T
1" Double Glazed - Warm-Edge Glazing Spacer
System U-Factor for Vision Glass

**Notes for System U-factor, SHGC and VT charts:**

For glass values that are not listed, linear interpolation is permitted.

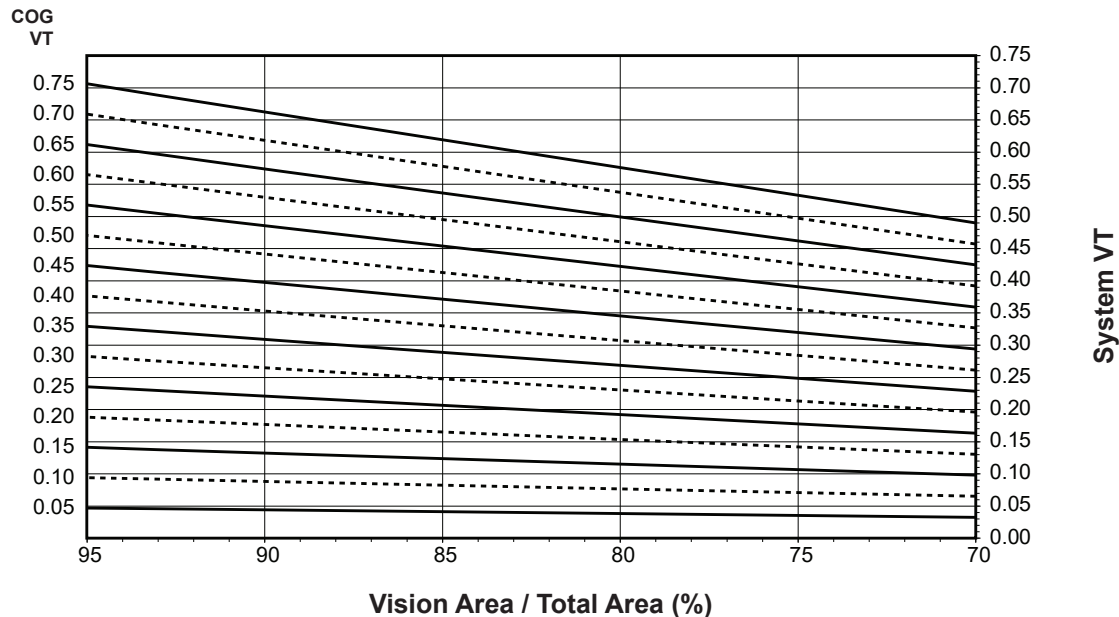
Glass properties are based on center of glass values and are obtained from your glass supplier.

Trifab® VersaGlaze® 601T
1" Double Glazed - Warm-Edge Glazing Spacer
System Solar Heat Gain Coefficient (SHGC) vs Percent of Vision Area



Charts are generated per AAMA 507.

System Visible Transmittance (VT) vs Percent of Vision Area



Charts are generated per AAMA 507.

Laws and building and safety codes governing the design and use of Kawneer products, such as glazed entrance, window, and curtain wall products, vary widely. Kawneer does not control the selection of product configurations, operating hardware, or glazing materials, and assumes no responsibility therefor.

Kawneer reserves the right to change configuration without prior notice when deemed necessary for product improvement.
 © 2013, Kawneer Company, Inc.

Thermal Transmittance ¹ (BTU/hr • ft² • °F)

Glass U-Factor ³	Overall U-Factor ⁴
0.48	0.55
0.46	0.54
0.44	0.52
0.42	0.50
0.40	0.49
0.38	0.47
0.36	0.45
0.34	0.44
0.32	0.42
0.30	0.40
0.28	0.39
0.26	0.37
0.24	0.35
0.22	0.34
0.20	0.32
0.18	0.30
0.16	0.29
0.14	0.27
0.12	0.25
0.10	0.24

Trifab® VersaGlaze® 601T
1" Double Glazed
Warm-Edge Glazing Spacer

NOTE: For glass values that are not listed, linear interpolation is permitted.

1. U-Factors are determined in accordance with NFRC 100.
2. SHGC and VT values are determined in accordance with NFRC 200.
3. Glass properties are based on center of glass values and are obtained from your glass supplier.
4. Overall U-Factor, SHGC, and VT Matrices are based on the standard NFRC specimen size of 2,000 mm wide by 2,000 mm high (78-3/4" by 78-3/4").

SHGC Matrix ²

Glass SHGC ³	Overall SHGC ⁴
0.75	0.67
0.70	0.62
0.65	0.58
0.60	0.54
0.55	0.49
0.50	0.45
0.45	0.40
0.40	0.36
0.35	0.32
0.30	0.27
0.25	0.23
0.20	0.19
0.15	0.14
0.10	0.10
0.05	0.05

Visible Transmittance ²

Glass VT ³	Overall VT ⁴
0.75	0.66
0.70	0.61
0.65	0.57
0.60	0.53
0.55	0.48
0.50	0.44
0.45	0.39
0.40	0.35
0.35	0.31
0.30	0.26
0.25	0.22
0.20	0.18
0.15	0.13
0.10	0.09
0.05	0.04

Laws and building and safety codes governing the design and use of Kawneer products, such as glazed entrance, window, and curtain wall products, vary widely. Kawneer does not control the selection of product configurations, operating hardware, or glazing materials, and assumes no responsibility therefor.

Kawneer reserves the right to change configuration without prior notice when deemed necessary for product improvement.
© 2013, Kawneer Company, Inc.

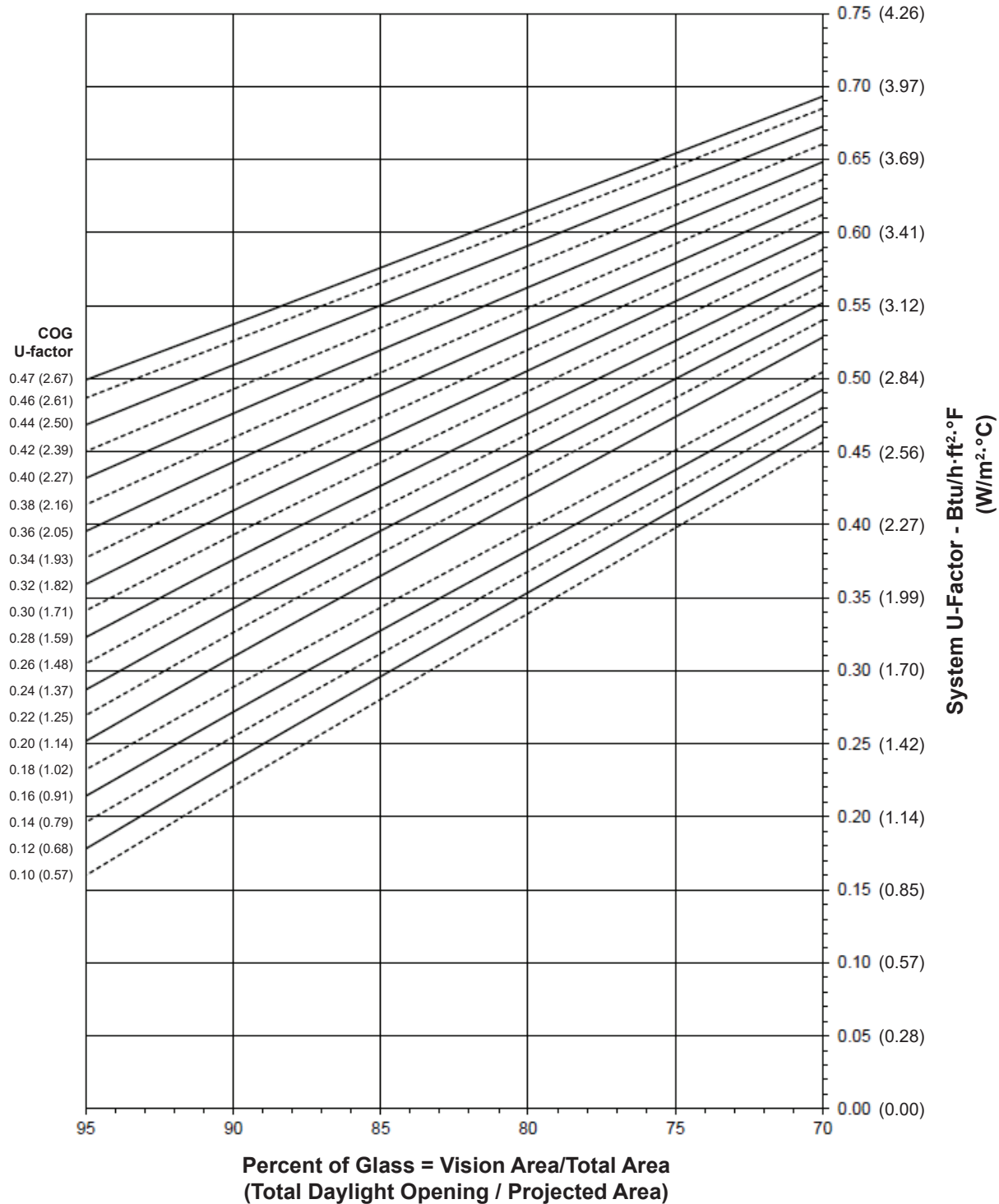
Note:

Values in parentheses are metric.

COG=Center of Glass.

Charts are generated per AAMA 507.

Trifab® VersaGlaze® 601T
1" Double Glazed - Aluminum Glazing Spacer
System U-Factor for Vision Glass

**Notes for System U-factor, SHGC and VT charts:**

For glass values that are not listed, linear interpolation is permitted.

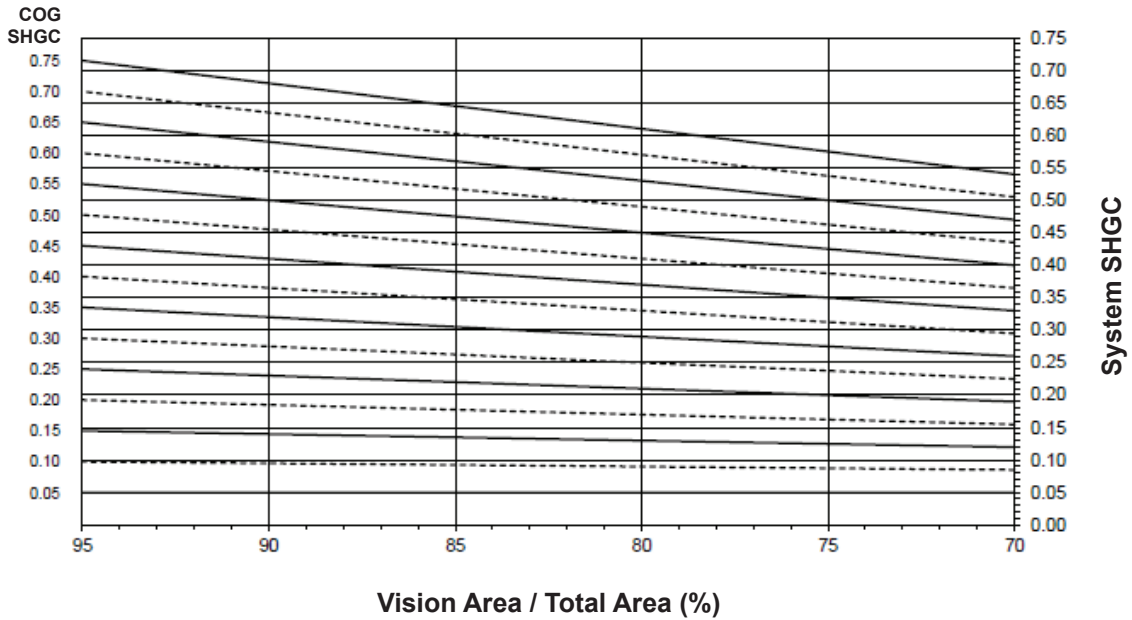
Glass properties are based on center of glass values and are obtained from your glass supplier.

Laws and building and safety codes governing the design and use of Kawneer products, such as glazed entrance, window, and curtain wall products, vary widely. Kawneer does not control the selection of product configurations, operating hardware, or glazing materials, and assumes no responsibility therefor.

Kawneer reserves the right to change configuration without prior notice when deemed necessary for product improvement.

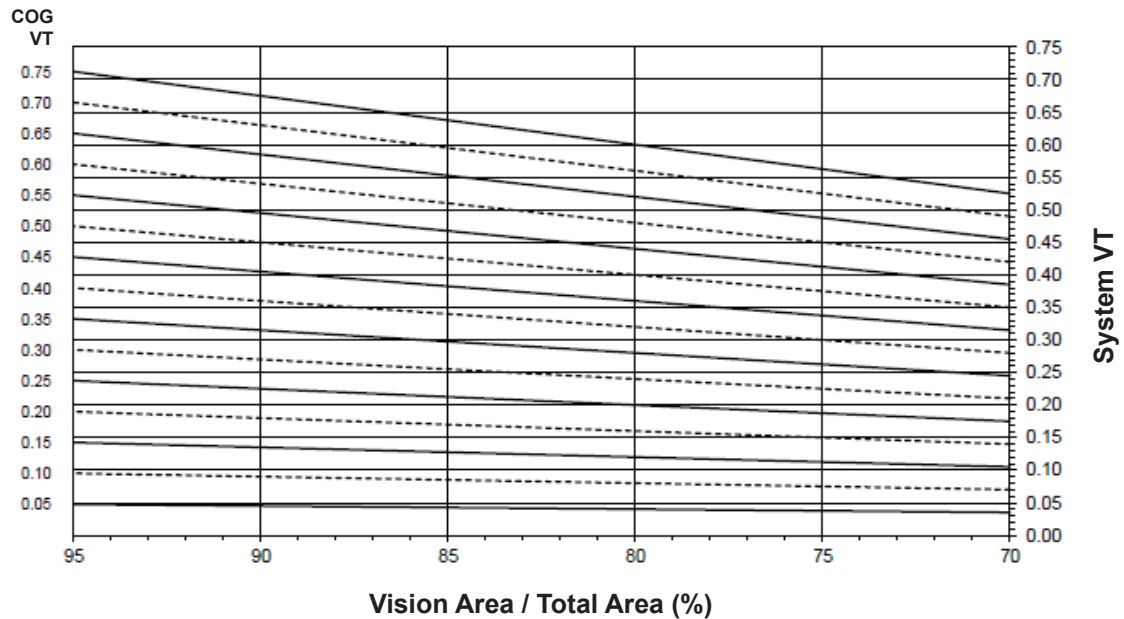
© 2013, Kawneer Company, Inc.

Trifab® VersaGlaze® 601T
1" Double Glazed - Aluminum Glazing Spacer
System Solar Heat Gain Coefficient (SHGC) vs Percent of Vision Area



Charts are generated per AAMA 507.

System Visible Transmittance (VT) vs Percent of Vision Area



Charts are generated per AAMA 507.

Laws and building and safety codes governing the design and use of Kawneer products, such as glazed entrance, window, and curtain wall products, vary widely. Kawneer does not control the selection of product configurations, operating hardware, or glazing materials, and assumes no responsibility therefor.

Kawneer reserves the right to change configuration without prior notice when deemed necessary for product improvement.
 © 2013, Kawneer Company, Inc.

Thermal Transmittance ¹ (BTU/hr • ft² • °F)

Glass U-Factor ³	Overall U-Factor ⁴
0.48	0.55
0.46	0.54
0.44	0.53
0.42	0.51
0.40	0.50
0.38	0.48
0.36	0.46
0.34	0.45
0.32	0.43
0.30	0.42
0.28	0.40
0.26	0.38
0.24	0.37
0.22	0.35
0.20	0.34
0.18	0.31
0.16	0.30
0.14	0.28
0.12	0.26
0.10	0.25

Trifab® VersaGlaze® 601T
1" Double Glazed
Aluminum Glazing Spacer

NOTE: For glass values that are not listed, linear interpolation is permitted.

1. U-Factors are determined in accordance with NFRC 100.
2. SHGC and VT values are determined in accordance with NFRC 200.
3. Glass properties are based on center of glass values and are obtained from your glass supplier.
4. Overall U-Factor, SHGC, and VT Matrices are based on the standard NFRC specimen size of 2,000 mm wide by 2,000 mm high (78-3/4" by 78-3/4").

SHGC Matrix ²

Glass SHGC ³	Overall SHGC ⁴
0.75	0.66
0.70	0.62
0.65	0.58
0.60	0.53
0.55	0.49
0.50	0.44
0.45	0.40
0.40	0.36
0.35	0.31
0.30	0.27
0.25	0.23
0.20	0.18
0.15	0.14
0.10	0.09
0.05	0.05

Visible Transmittance ²

Glass VT ³	Overall VT ⁴
0.75	0.66
0.70	0.61
0.65	0.57
0.60	0.53
0.55	0.48
0.50	0.44
0.45	0.39
0.40	0.35
0.35	0.31
0.30	0.26
0.25	0.22
0.20	0.18
0.15	0.13
0.10	0.09
0.05	0.04

Laws and building and safety codes governing the design and use of Kawneer products, such as glazed entrance, window, and curtain wall products, vary widely. Kawneer does not control the selection of product configurations, operating hardware, or glazing materials, and assumes no responsibility therefor.

Kawneer reserves the right to change configuration without prior notice when deemed necessary for product improvement.
© 2013, Kawneer Company, Inc.

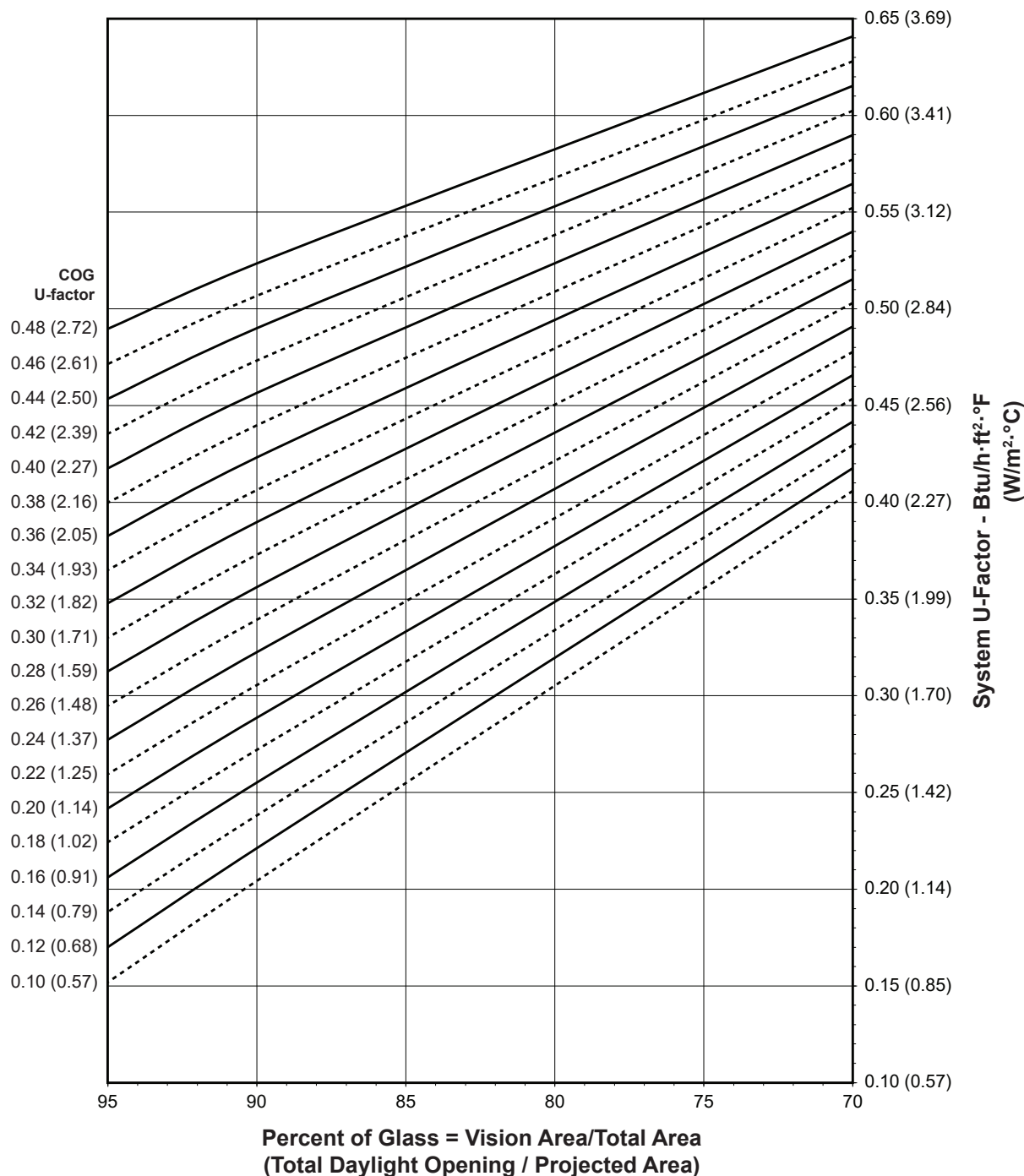
Note:

Values in parentheses are metric.

COG=Center of Glass.

Charts are generated per AAMA 507.

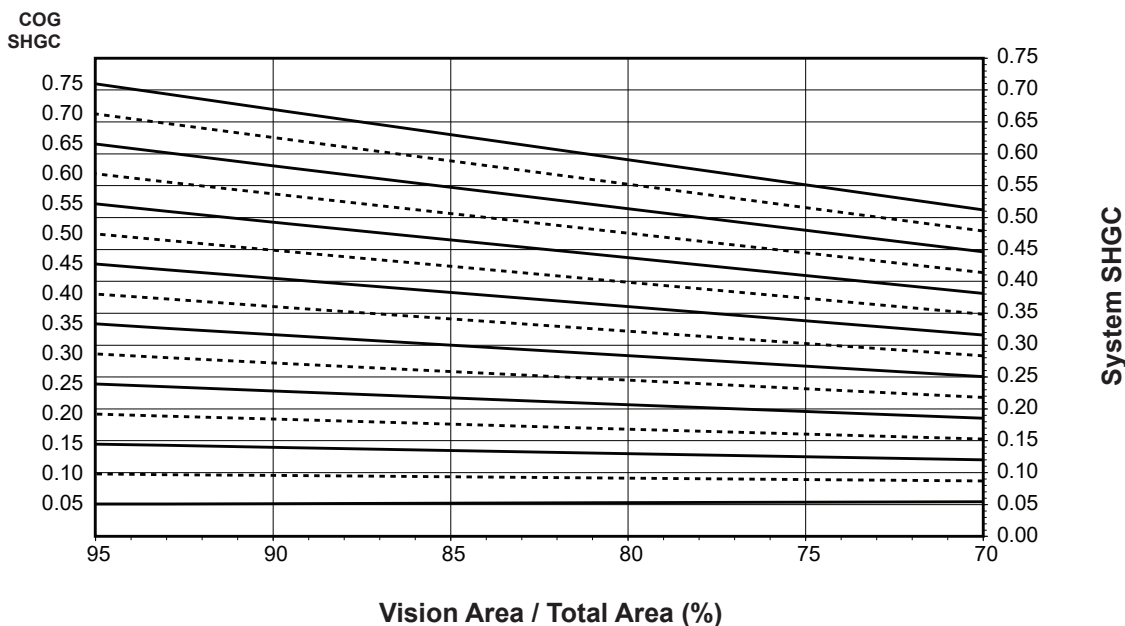
Trifab® VersaGlaze® 601UT
1" Double Glazed - Warm-Edge Glazing Spacer
System U-Factor for Vision Glass

**Notes for System U-factor, SHGC and VT charts:**

For glass values that are not listed, linear interpolation is permitted.

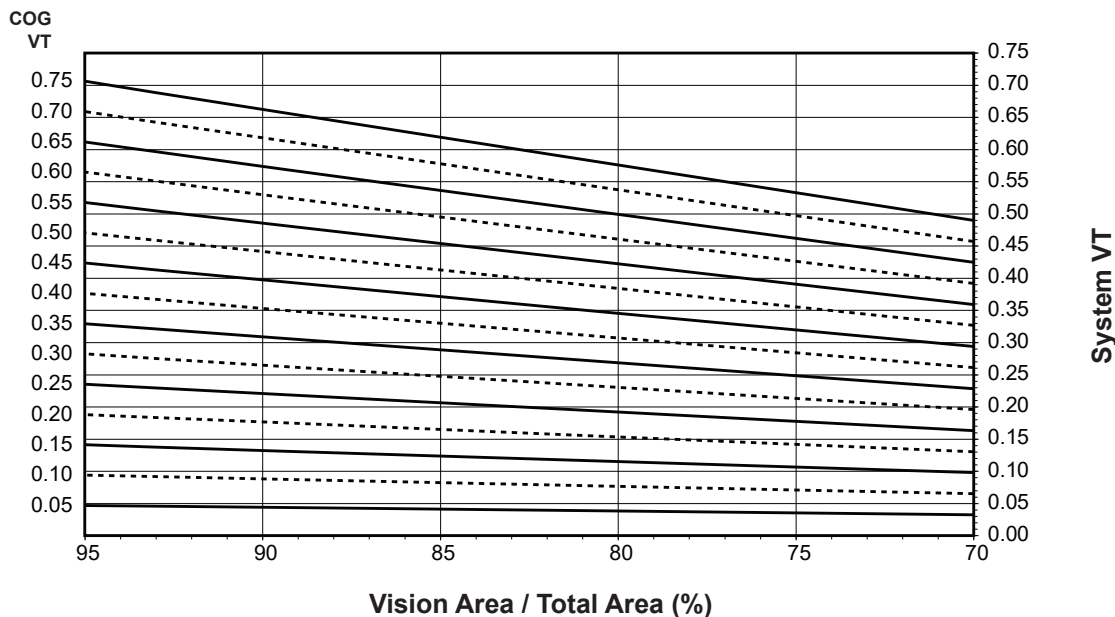
Glass properties are based on center of glass values and are obtained from your glass supplier.

Trifab® VersaGlaze® 601UT
1" Double Glazed - Warm-Edge Glazing Spacer
 System Solar Heat Gain Coefficient (SHGC) vs Percent of Vision Area



Charts are generated per AAMA 507.

System Visible Transmittance (VT) vs Percent of Vision Area



Charts are generated per AAMA 507.

Laws and building and safety codes governing the design and use of Kawneer products, such as glazed entrance, window, and curtain wall products, vary widely. Kawneer does not control the selection of product configurations, operating hardware, or glazing materials, and assumes no responsibility therefor.

Kawneer reserves the right to change configuration without prior notice when deemed necessary for product improvement.
 © 2013, Kawneer Company, Inc.

Thermal Transmittance ¹ (BTU/hr • ft² • °F)

Glass U-Factor ³	Overall U-Factor ⁴
0.48	0.53
0.46	0.51
0.44	0.49
0.42	0.48
0.40	0.46
0.38	0.44
0.36	0.43
0.34	0.41
0.32	0.39
0.30	0.38
0.28	0.36
0.26	0.34
0.24	0.33
0.22	0.31
0.20	0.29
0.18	0.28
0.16	0.26
0.14	0.24
0.12	0.23
0.10	0.21

Trifab® VersaGlaze® 601UT
1" Double Glazed
Warm-Edge Glazing Spacer

NOTE: For glass values that are not listed, linear interpolation is permitted.

1. U-Factors are determined in accordance with NFRC 100.
2. SHGC and VT values are determined in accordance with NFRC 200.
3. Glass properties are based on center of glass values and are obtained from your glass supplier.
4. Overall U-Factor, SHGC, and VT Matrices are based on the standard NFRC specimen size of 2,000 mm wide by 2,000 mm high (78-3/4" by 78-3/4").

SHGC Matrix ²

Glass SHGC ³	Overall SHGC ⁴
0.75	0.67
0.70	0.62
0.65	0.58
0.60	0.53
0.55	0.49
0.50	0.45
0.45	0.40
0.40	0.36
0.35	0.31
0.30	0.27
0.25	0.23
0.20	0.18
0.15	0.14
0.10	0.10
0.05	0.05

Visible Transmittance ²

Glass VT ³	Overall VT ⁴
0.75	0.66
0.70	0.61
0.65	0.57
0.60	0.53
0.55	0.48
0.50	0.44
0.45	0.39
0.40	0.35
0.35	0.31
0.30	0.26
0.25	0.22
0.20	0.18
0.15	0.13
0.10	0.09
0.05	0.04

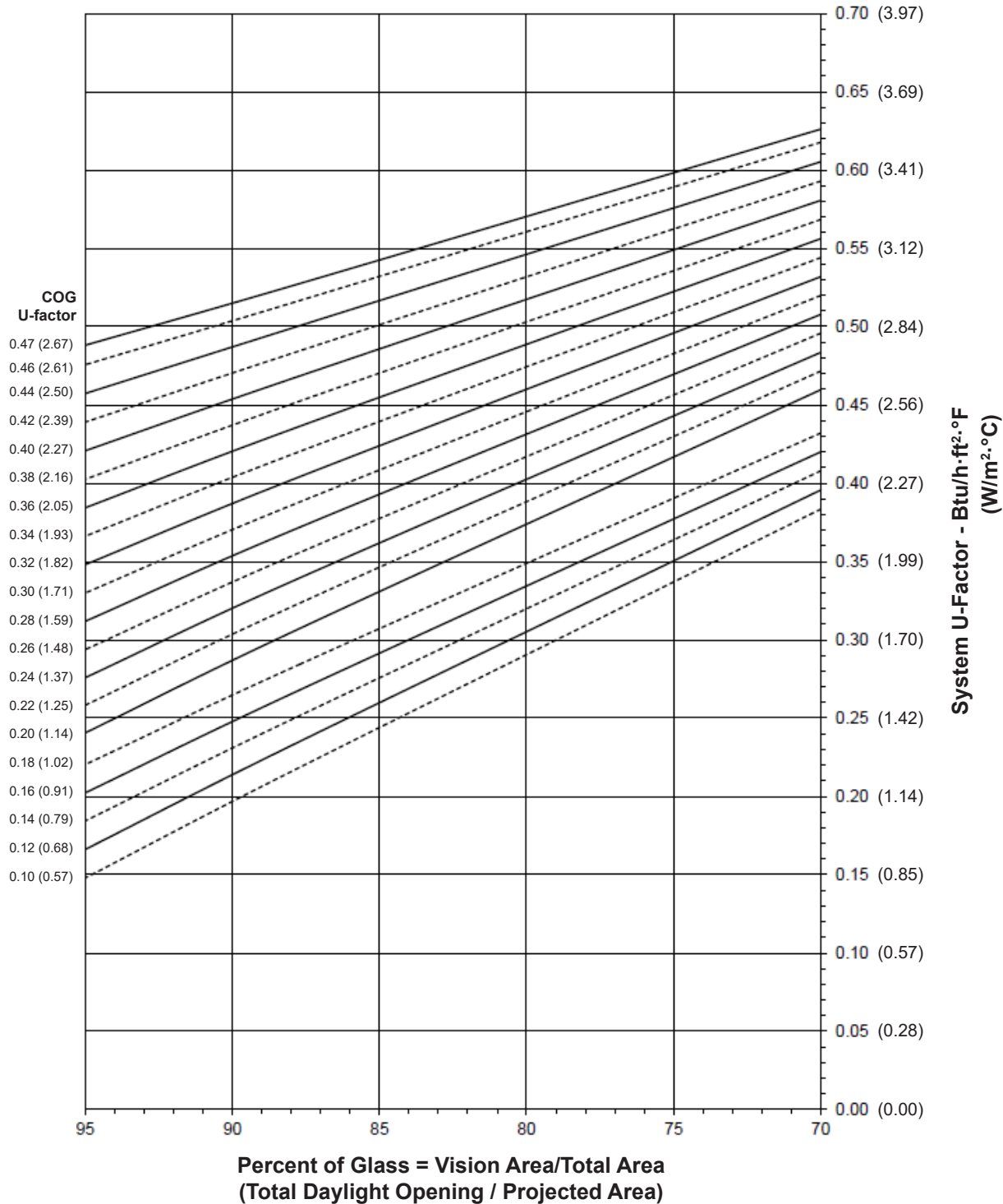
Note:

Values in parentheses are metric.

COG=Center of Glass.

Charts are generated per AAMA 507.

Trifab® VersaGlaze® 601UT
1" Double Glazed - Aluminum Glazing Spacer
System U-Factor for Vision Glass

**Notes for System U-factor, SHGC and VT charts:**

For glass values that are not listed, linear interpolation is permitted.

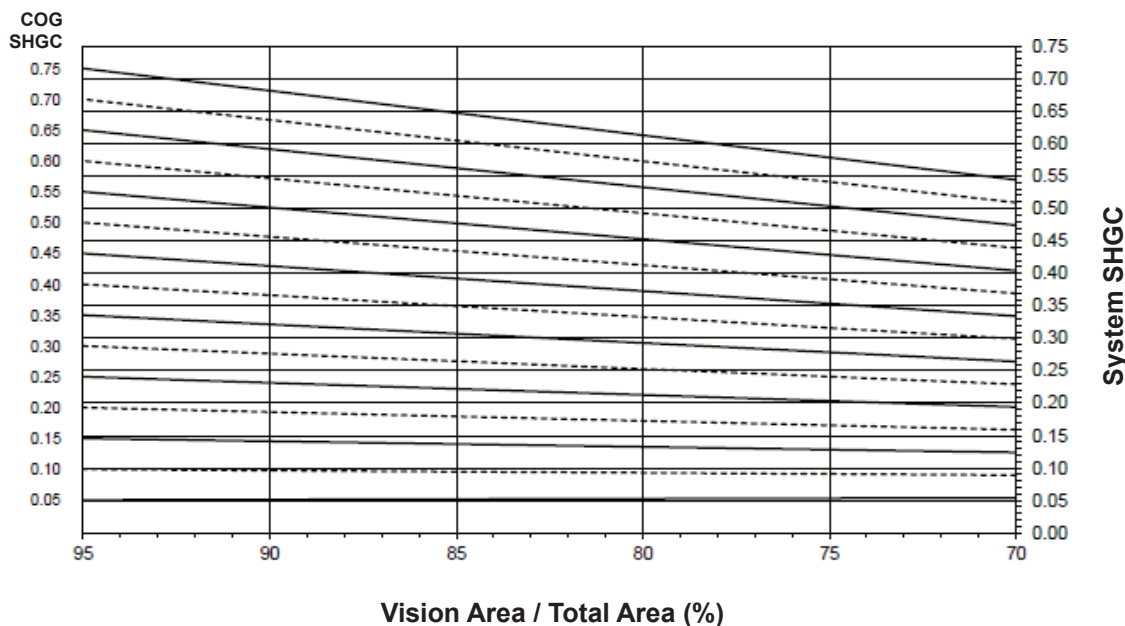
Glass properties are based on center of glass values and are obtained from your glass supplier.

Laws and building and safety codes governing the design and use of Kawneer products, such as glazed entrance, window, and curtain wall products, vary widely. Kawneer does not control the selection of product configurations, operating hardware, or glazing materials, and assumes no responsibility therefor.

Kawneer reserves the right to change configuration without prior notice when deemed necessary for product improvement.

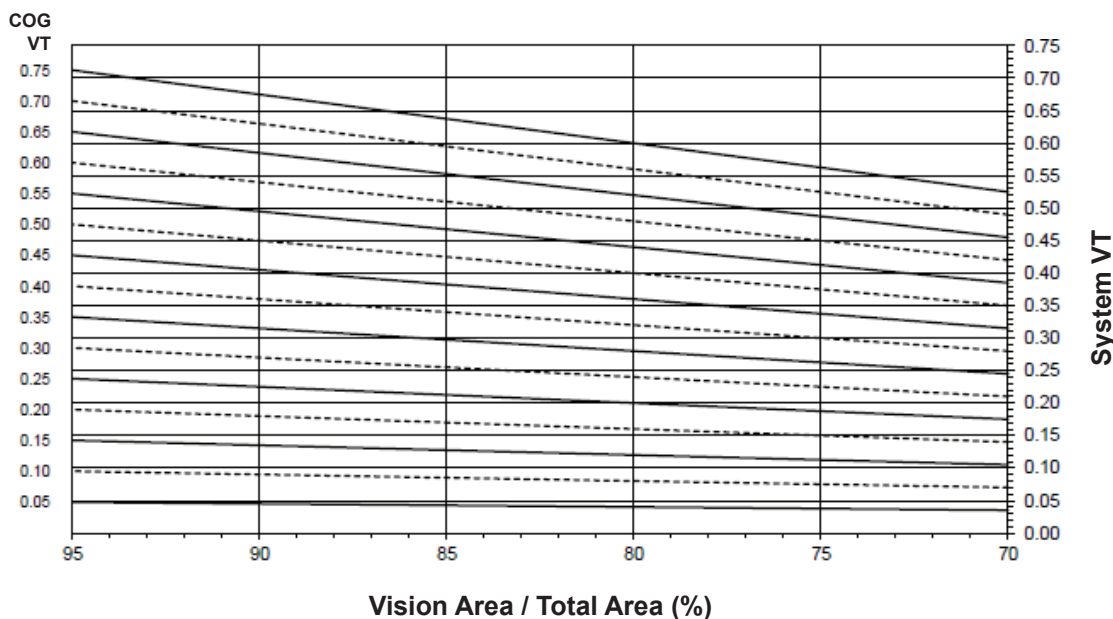
© 2013, Kawneer Company, Inc.

Trifab® VersaGlaze® 601UT
1" Double Glazed - Aluminum Glazing Spacer
System Solar Heat Gain Coefficient (SHGC) vs Percent of Vision Area



Charts are generated per AAMA 507.

System Visible Transmittance (VT) vs Percent of Vision Area



Charts are generated per AAMA 507.

Laws and building and safety codes governing the design and use of Kawneer products, such as glazed entrance, window, and curtain wall products, vary widely. Kawneer does not control the selection of product configurations, operating hardware, or glazing materials, and assumes no responsibility therefor.

Kawneer reserves the right to change configuration without prior notice when deemed necessary for product improvement.
 © 2013, Kawneer Company, Inc.

Thermal Transmittance¹ (BTU/hr • ft² • °F)

Glass U-Factor ³	Overall U-Factor ⁴
0.48	0.53
0.46	0.52
0.44	0.50
0.42	0.48
0.40	0.47
0.38	0.45
0.36	0.44
0.34	0.42
0.32	0.40
0.30	0.39
0.28	0.37
0.26	0.36
0.24	0.34
0.22	0.32
0.20	0.31
0.18	0.28
0.16	0.27
0.14	0.25
0.12	0.24
0.10	0.22

Trifab® VersaGlaze® 601UT
1" Double Glazed
Aluminum Glazing Spacer

NOTE: For glass values that are not listed, linear interpolation is permitted.

1. U-Factors are determined in accordance with NFRC 100.
2. SHGC and VT values are determined in accordance with NFRC 200.
3. Glass properties are based on center of glass values and are obtained from your glass supplier.
4. Overall U-Factor, SHGC, and VT Matrices are based on the standard NFRC specimen size of 2,000 mm wide by 2,000 mm high (78-3/4" by 78-3/4").

SHGC Matrix²

Glass SHGC ³	Overall SHGC ⁴
0.75	0.67
0.70	0.62
0.65	0.58
0.60	0.53
0.55	0.49
0.50	0.45
0.45	0.40
0.40	0.36
0.35	0.31
0.30	0.27
0.25	0.23
0.20	0.18
0.15	0.14
0.10	0.10
0.05	0.05

Visible Transmittance²

Glass VT ³	Overall VT ⁴
0.75	0.66
0.70	0.61
0.65	0.57
0.60	0.53
0.55	0.48
0.50	0.44
0.45	0.39
0.40	0.35
0.35	0.31
0.30	0.26
0.25	0.22
0.20	0.18
0.15	0.13
0.10	0.09
0.05	0.04

Laws and building and safety codes governing the design and use of Kawneer products, such as glazed entrance, window, and curtain wall products, vary widely. Kawneer does not control the selection of product configurations, operating hardware, or glazing materials, and assumes no responsibility therefor.

Kawneer reserves the right to change configuration without prior notice when deemed necessary for product improvement.
© 2013, Kawneer Company, Inc.